



# THE REDMOND RECORDER

*Every town has a history. Discover ours.*

REDMOND HISTORICAL SOCIETY NEWSLETTER

QUARTER ONE • VOL. 28 • NO. 1

## SOCIETY HONORS LEGACY OF CHINESE AMERICANS IN REDMOND



RHS staff, board, and student volunteers visit the Wing Luke Museum. Photo: John Oftebro

Historically, Chinese immigrants have contributed greatly to Washington's economy, particularly as miners and workers in the salmon canning industry. Their presence in Washington then grew significantly with the construction of the transcontinental railroad, beginning in 1871, which relied heavily on Chinese labor.

Chinese Americans have been a part of Redmond's community since at least 1920, with **Ah Ming** and **Sick Kee** being the first Chinese immigrants living in Redmond to be recorded on the US Census. Today, Chinese Americans continue to be a significant part of Redmond's diverse community, with Chinese being the second most common language spoken in Northwest King County, which includes Redmond.

Over the summer of 2025, the Society partnered with The Little Masters Club to explore stories from Redmond's Chinese American community more deeply. Together, we worked to engage high school volunteers to research Chinese American History in Redmond.

This project broadened learning opportunities and introduced new audiences to local history, including an educational visit to the Wing Luke Museum. Discover the volunteer findings in our digital exhibit, launching January 2026: [www.redmondhistoricalsociety.org/digital-exhibits](http://www.redmondhistoricalsociety.org/digital-exhibits)

## IN THIS ISSUE

- Vice President's Desk, p. 2.
- Volunteer Corner, p. 3.
- In Memoriam: Tony & Betty Emmanuel, p. 4.
- Winter/Spring Events Calendar, p. 5.
- President's Notebook: "History of Redmond's Fire Department," pp. 6-7.
- Local History: "Willowmoor Farm: Clise Period, 1908-1915," pp. 8-9.
- Recounting Our History: "Mom Phones Dr. Way," p. 10.
- Membership Social, p. 11.
- Local History: Justice White Chapter 4, "The Judge Takes a Wife," pp. 12-13.
- Membership Birthdays, p. 14.
- Lifetime Members, p. 14.

2026

## BOARD OF DIRECTORS

### OFFICERS

John Oftebro • President  
 Laura Lee Bennett • Sr Vice President  
 Alex Roelofs • Vice President Collections  
 VACANT • Vice President Finance  
 Deborah Oftebro • Secretary

### DIRECTORS AT LARGE

Richard Hao  
 Paige Norman  
 Ed O'Brien  
 Jo Ann Potter

### ADMINISTRATIVE & COLLECTIONS MANAGER

Halee P. Turner

Our finances are public record and may be viewed at the office.

### NEWSLETTER EDITOR

Laura Lee Bennett

### COPY EDITOR

Marissa Bea

### GRAPHIC DESIGNER

Teresa Potter, Urban Dakota Creative

### PROOFREADER

Tom Hitzroth

### FREE NEWSLETTER

The Redmond Recorder is published quarterly (Spring, Summer, Fall, Winter). Subscribe to our newsletter at [RedmondHistoricalSociety.org](https://www.facebook.com/Redmond.Historical.Society.org) or by becoming a member. You will also receive monthly announcements about RHS speaker programs, community events, and other announcements via email or postcard.

### FIND US ON FACEBOOK:

<https://www.facebook.com/Redmond.Historical.Society/>

**PHONE** 425.885.2919

**ADDRESS** 16600 NE 80th Street #122  
 Redmond, WA 98052

**WEBSITE** [redmondhistoricalsociety.org](https://www.redmondhistoricalsociety.org)

**EMAIL** [info@redmondhistoricalsociety.org](mailto:info@redmondhistoricalsociety.org)

**HOURS** Mon-Wed @ 9:30AM-4:30PM



Laura Lee Bennett,  
 VP and Program Chair

## RING IN THE NEW YEAR WITH THE SOCIETY!

Please join us for our Annual Ice Cream Social and Membership Meeting at the Happy Valley Grange on Saturday, January 10th, 2-4 pm. Connect with old friends, meet new people, socialize, and network while we thank you for preserving Redmond's rich heritage through your Membership with the Redmond Historical Society! The Social is free and open to all—bring a friend or two! We'll share reports of our activities and programs, raffle drawings with great prizes, and hot fudge sundaes!



## WELCOME, NEW VOLUNTEER, MARISSA BEA!

In Fall 2025, **Marissa Bea** joined our Newsletter Team as Copy Editor—and we couldn't be more excited! With 16+ years of experience in editing, writing, and project management, plus certificates in Editing, Museum Studies, and SEO/Content Marketing, she brings powerhouse

skills to the table. She also comes highly recommended by our VP of Collections, Alex Roelofs.

A self-described "polymath," Marissa's work spans UX research, publishing, digital media, résumé services, film, TV, and the arts. And when she's not polishing prose, you'll likely find her on the soccer field.

*Welcome, Marissa!*



### Compass Realtors Partner with RHS to Assist with Fundraising

Compass Real Estate Brokers, Cynthia Olsen and Mary Sullivan, have formed a unique partnership with Redmond Historical Society in an effort to help with fundraising for the Society. Cynthia and Mary will donate 10% of their earned commissions to support the Society when members use or refer business that results in a closed transaction. This partnership was formed as a way to give back to organizations that support our communities. Choose real estate brokers who go above and beyond to help with every detail of the buying and selling process, and support the Society! Cynthia and Mary will help you plan, organize, donate, and more—they do it all! Please be sure to say hello to Cynthia and Mary at our next meeting! For more info, contact [Cynthia.Olsen@Compass.com](mailto:Cynthia.Olsen@Compass.com), 425 877-9904, or [Mary.Sullivan@Compass.com](mailto:Mary.Sullivan@Compass.com), 425 449-2841.

COMPASS



## 897 VOLUNTEER HOURS!

By Jo Ann Potter

During 2025, volunteers contributed in many ways to the Redmond Historical Society.

Ice cream is always a good way to start! Our January Ice Cream Social began the year with meeting and greeting old friends and acquaintances at the Happy Valley Grange.

The grand opening in May of the Downtown Redmond light rail station, with a display of the history of area transportation, was staffed by volunteers. The street corner tent attracted many folks curious about the Society.

In June, volunteers were a part of Sunrise Elementary's field trip. Students toured our museum, created poetry at Adair House, and visited local landmarks.

Volunteers continued work on various projects and research in June, July, and August. In the Office/Museum, the need for filing, organizing, photo ID, and other tasks—such as *dusting*—never takes a summer vacation.

Of course, our Saturday Speaker Series was interesting and informative, as always. Did you know it takes 17-20 volunteers each Saturday to make the program a success?

Setup of chairs and IT equipment, greeters, coffee and tea, snacks, name tags, membership table, and cleanup—all require faithful members. Our President, **John Oftebro**, and VP/Programs

Chair, **Laura Lee Bennett**, spend hours arranging and interviewing speakers. Our Office Manager, **Halee Turner**, is indispensable in putting the wheels on many of the Board's ideas, as well as being an IT guru.

Volunteer with us! We need many hands and hearts to continue making the Redmond Historical Society a vibrant organization.

Contact: [volunteercoordinator@redmondhistoricalsociety.org](mailto:volunteercoordinator@redmondhistoricalsociety.org)



Ice Cream Social 2025:  
Jo Ann and Dale Potter, Sally Jo Eberhardt.  
Photo: Patsy Rosenbach



"Volunteering gives meaning to my life, and I am grateful for the many opportunities I have found."  
— Cheryl Magnuson, Lifetime Member


### Membership Celebration - & - Ice Cream Social

**Saturday, January 10th**  
2:00 PM - 4:00 PM

**Happy Valley Grange**  
19720 NE 50th St,  
Redmond, WA 98053

*Open to all!*  
*RSVPs appreciated.*  
**425-885-2919**



**Art by Devika Kapoor**

## LIFETIME MEMBERS ANTHONY & BETTY EMMANUEL

By Paige Norman

**Anthony Mathew Emmanuel** was born June 6, 1924, in Pennsylvania, to Joseph and Mary Emmanuel, their fourth son and seventh child. By 1930, the family had moved to California. After serving on an aircraft carrier during World War II, Tony returned to California and married Betty (Wing) in 1954, moving to Washington in the 1960s. He was a field representative and store designer for Bel-Square Equipment Company in Seattle, and worked with **Duane Isackson** at Duane B Stevens Construction.

**Betty Emmanuel** was a bookkeeper at Redmond Office Supply and volunteered in the PTAs at both Redmond Elementary and Redmond Jr. High. She was also involved in Girl Scout Troop 1447.

Tony enjoyed writing, including an article on the Happy Valley Bridge, and another titled "The Rare Breed," recounting his memories of The Redmond Silhouette Dance Club.

The Emmanuels purchased the "Cook" house, formerly owned by **Karl and Tress Cook**, and were neighbors to **Dr. and Mrs. Way** on Weber Point on Lake Sammamish—site of the old Weber shingle mill. Tony attended his first Society meeting in June 2002, joining as a Lifetime Member in 2012. Betty began attending in September 2004, and became a Lifetime Member in 2016.

Betty passed away in 2024 at 103, with Tony following her in June 2025 at the age of 101. We extend our heartfelt sorrow and appreciation for their commitment to local history, to the Society, and to the Redmond community.

To learn more about the Emmanuels, and explore Tony's writing, see the blog post: [Lifetime Members Anthony & Betty Emmanuel – In Memoriam](#)



Tony, Betty, and Tracy Emmanuel  
at RHS Picnic, c. 2012.

Excerpted from *The Redmond Recorder*, October 2006

*Tony Emmanuel alerted us to the fact that the Happy Valley bridge just east of the Old Brick Road and connecting to Highway 202 is being replaced. He also shared these memories:*

I called it the "Happy Valley Narrows." This was a dangerous, deadly bridge. Allowing a 55 mile an hour speed through a bridge this narrow was asking for trouble.

Rob Klamser, who I believe was a City of Redmond engineer, was driving home from Ames Lake about 1970. He failed to make it through the narrow bridge and was killed. A few years later, another person rolled over while trying to squeeze through the narrow passage, and ended up in the mud at the swampy roadside. After rolling several times, and destroying his sports car, he crawled through the weeds with just scrapes and bruises.

Numerous other scrapes and scratches occurred that went unreported. How many, we might never know.



Photo by Diane Emmanuel



## LOVE HISTORY? ENJOY THESE SOCIETY EVENTS!

All events are free unless otherwise posted. Saturday Speaker Series is free to RHS members, suggested donation \$5 for non-members. No registration required. **Note:** Recordings of the Saturday Speaker Series will be available on the [RHS YouTube channel](#), following in-person programs, when permitted by speakers. More info: [www.redmondhistoricalsociety.org](http://www.redmondhistoricalsociety.org)

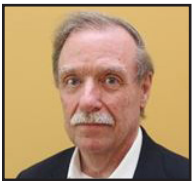
### SATURDAY SPEAKER SERIES



**February 14 | Leaving Home, Building a Future: The Immigration Story of the Pacific Northwest | Brian Casserly, PhD, Professor of History and History Department Chair, Bellevue College**  
10:30 AM, Old Redmond Schoolhouse at 16600 NE 80th Street, Redmond, WA 98052.



**March 14 | From Southern Accents to Catering and Pomegranate Bistro: A Chef's Journey in Redmond | Lisa Dupar, Owner**  
10:30 AM, Old Redmond Schoolhouse at 16600 NE 80th Street, Redmond, WA 98052.



**April 11 | Murder at Avondale: Joseph Cicero, April 21, 1895 | Tom Hitzroth and Dean Jowers**  
10:30 AM, Old Redmond Schoolhouse at 16600 NE 80th Street, Redmond, WA 98052.



### EVENING SPEAKER SERIES

**March 18 | Carmelita: A Vindication for the Unwritten: Or How to Write Yourself Back into History | Ana Maria Campoy | WA Women's History Initiative: Suffrage Lecture Series**  
6:00 PM, Redmond Library, 15990 NE 85th Street, Redmond, WA 98052.



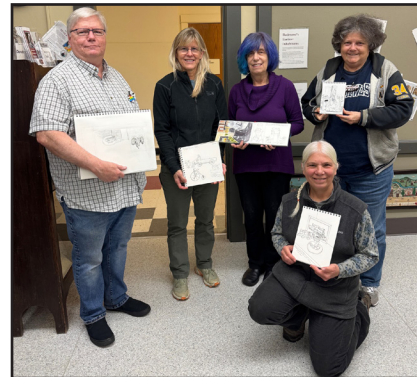
### EVENT HIGHLIGHTS - FALL 2025

#### Downtown Redmond Art Walk, September 18th



Visitors viewed works from the Society's collections and *River Trestle*, a new Warli-style piece by Redmond artist Devika Kapoor. Shown with works by Doris Colvin and Russ Goetschius, the exhibit offered a glimpse of Redmond's history "through an artist's eye."

#### Eastside Sketchers, November 17th



Local artists found many "cool, old things" to draw, such as a pot-bellied stove, ceramic chicken, and a book of S&H Green Stamps.

Photos by RHS Volunteers



## FIRE! FIRE! FIRE! HISTORY AND EVOLUTION OF THE REDMOND FIRE DEPARTMENT

By John Oftebro

### The Walther Hotel Fire: A Turning Point

The shouts rang out on Leary Way when the Walther Hotel fire ignited in the early morning of Sunday March 13, 1910, in Redmond. The fire started in the third-floor chimney and was fought by a volunteer bucket brigade. Eventually it was extinguished by controlled dynamite blast after a chemical engine and hose cart—pulled by hand from Kirkland—arrived too late to provide substantial help.

### Motivation for Incorporation and Infrastructure

At that time, most buildings in Redmond were constructed of wood, making them susceptible to fire. The “Great Fire” motivated the community to apply for legal town status, which became possible when the population reached 300 in 1912. This milestone made Redmond eligible for incorporation. With incorporation in place, a bond issue was passed to establish a water system on land donated by



Photo credit: RHS Archives

William Perrigo on the east side of Education Hill.

### Formation and Growth of the Fire Department

In 1946, a volunteer fire department was formed in Redmond, with 15 charter members operating out of a two-stall garage located at 164th Ave NE & Cleveland Street. Firefighting equipment consisted of a surplus truck from another district and hand tools.

In 1950, a building was built to house City Hall, the police, and the fire departments until 1981. That building served as the Old Firehouse Teen Center until it was

condemned in 2025. Recently, City Council voted to rebuild a new teen center at the same location as the existing building.

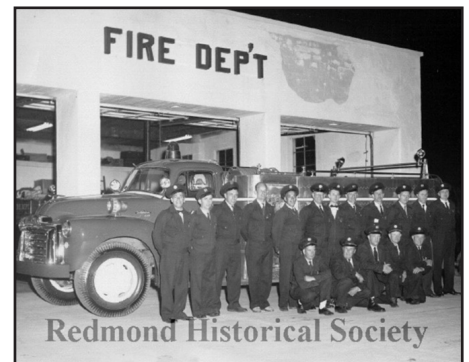


Photo: City of Redmond website



### Advancements in Firefighting Equipment

Redmond's first Aid Car was purchased with funds raised by the Lions Club and the Bike Derby in 1950 and served the community until 1973. The Fire Department headquarters, Station 11, was built in 1981 at the corner of 161st and 85th Ave NE, introducing Emergency Medical Technician (EMT) and rescue operations. Continued growth supported a partnership with King County Fire District 34, expanding service coverage to over 30 square miles.

### Expansion of Fire Stations and Modernization

Over the years, other stations were built and upgraded: Stations No. 12 in Overlake, 13 on Union Hill, 14 at Ames Lake, 16 in Southeast Redmond, 17 on Education Hill/North Redmond, and 18 for Redmond Ridge.

Equipment upgrades continued as stations were modernized. By 2017, new trucks were predominately Pierce Fire engines, and with the growth of six-story buildings, a Pierce 100-foot aerial ladder truck was purchased.

### Innovations and Sustainability

In 2025, Redmond Fire Department (RFD) became the first city department in Washington state with a Pierce Volterra electric pumper fire engine. This efficient vehicle has an 80-mile range, with a diesel backup extending to 200 miles. It supports the City of Redmond's goal for net-zero emissions while also providing improved safety for firefighters.



Redmond Fire Department's new EV engine.  
Photo: City of Redmond website

### Comprehensive Services Provided by RFD

Besides providing fire suppression, the RFD provides emergency medical services (EMS), hazardous-material response, rescue operations, and community education programs from the seven stations located in Redmond and surrounding King Country areas.

### Supporting Vulnerable Community Members

Mobile Integrated Health (MIH) is a service that aids vulnerable community members through referral from frequent 911 callers, complex patients, and those with non-emergent medical or social needs. When an individual is referred to MIH, a three-person team visits them in their home to assess their needs and create a plan for support.

### EMS and Paramedic Training

The first graduating class of paramedics were trained in 1970 at Harborview Medical Center and the University of Washington for the Seattle Fire Department Medic One program. Redmond's Medic One unit, Medic-19, is at Station 11 in Redmond. Aid units are

present at all the stations, except for Station 16, which responds with its fire engine or its rescue Aid vehicle.



RFD Medic One and Aid  
Unit from Station 11  
Photo: City of Redmond website

### Current Staffing and Future Plans

Currently, the Redmond Fire Department is staffed by 167 specialists across all departments. The City's Capital Facilities Plan for the next five years includes replacing older apparatus, upgrading stations, adding EV charging at Stations 11 and 12, and expanding Station 17 to ensure sustainability for the growing community.

### Dedication and Service

The service and dedication of the Redmond Fire Department are best demonstrated in their recruiting video. The community is encouraged to appreciate and support this remarkable and evolving team of trained, professional, and dedicated individuals.

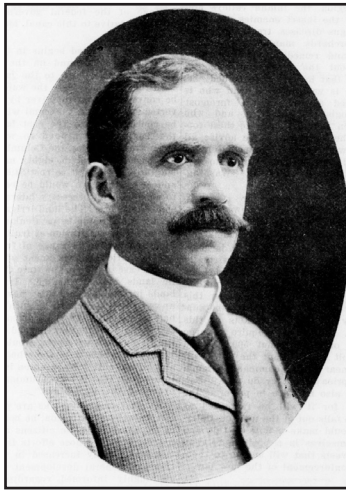
Watch the Redmond Fire Department Recruiting Video:  
<https://youtu.be/OVsCTVFLzSE>

## WILLOWMOOR FARM: CLISE PERIOD, 1908–1915

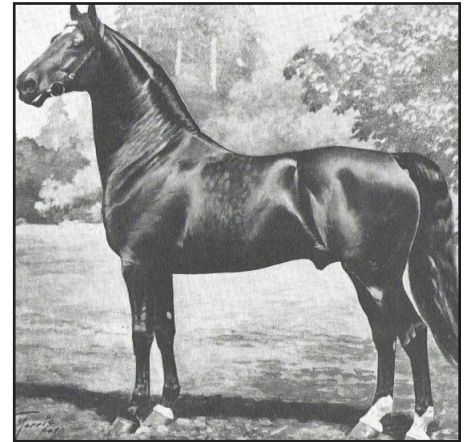
By Tom Hitzroth

In 1905, **James Clise** began expansion of his property, and by 1908, Willowmoor Farm had taken on the character it would have until 1941. During this time, the number of structures increased to 34, which included the house, barns, silos, implement sheds, bunkhouses for the single men, and cottages for the men and their families; the latter was considered an innovation to make the working conditions and life for his employees better. Another unique innovation was a narrow-gauge railroad for use in the barnyard (see "Mapping Willowmoor (Marymoor) Farm – Part 1" in the [Fall '25 issue](#) of this newsletter.)

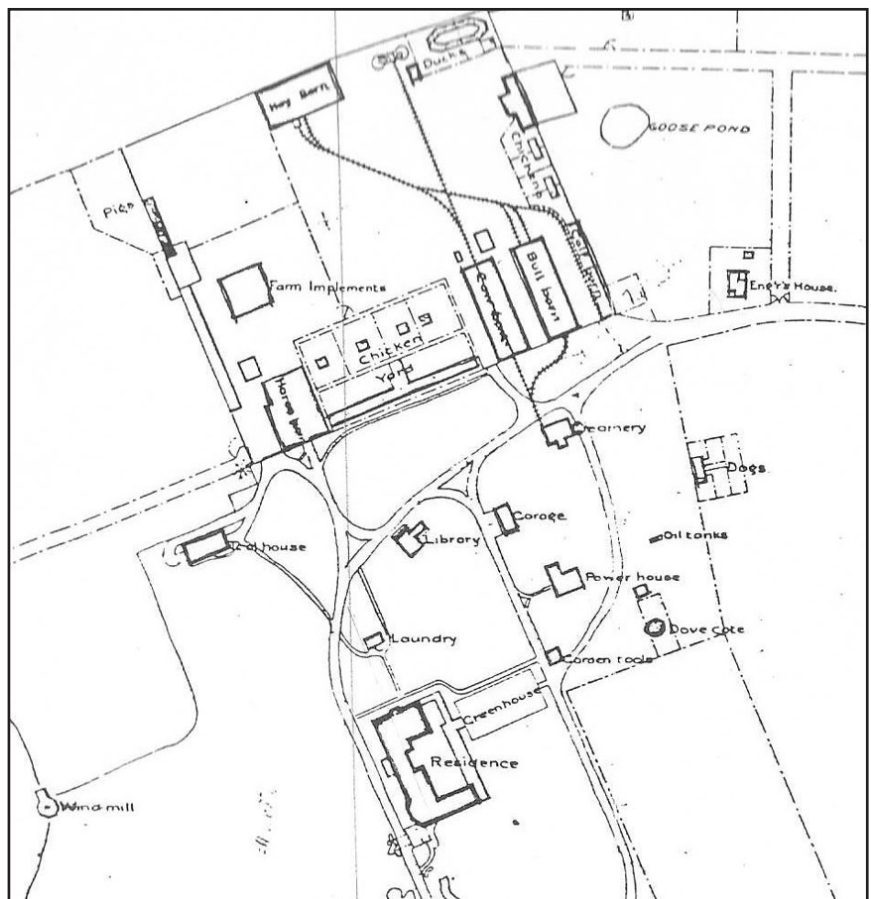
Clise imported Morgan horses from New England, as he had been told they were known as a strong, intelligent breed, adaptable to many uses. He used them for work around the farm and for show, entering them in many competitions across Washington and neighboring states. One of them, Troubadour, won Grand National recognition in 1909. He sold the herd in 1911 to focus on farming endeavors.



James W. Clise, June 26, 1902.  
Photo: *Ranche and Range*,  
courtesy Chroniching America



Troubadour - 1909 Grand Champion.  
Photo: "Willowmoor" pamphlet by Helen and  
Richard Johnson, Marymoor Museum, 1976



1908 map of Willowmoor Farm. Source: Author's collection





Ayrshires in the cow barn, Undated,  
Photo: Eastside Heritage Center

Clise imported Ayrshire cattle from Scotland, ultimately developing one of the four largest herds in the United States. They were excellent milk producers, their milk was rich in protein and sugar, and was the only milk that Henry Ford would serve in his Dearborn, Michigan hospital. They were also used as show cattle, winning recognition in Washington and neighboring states. He had at least 100 registered Ayrshires.

In 1908, Clise sold a number of Ayrshires to Japan. In September 1909, Baron Shibusawa, a prominent member of the government, brought a 40-person delegation to the United States on an economic and trade mission. Seattle was his first city visit. The Japanese business magnate spent half a day visiting Willowmoor Farm. Several members of his delegation remained at Willowmoor for many days, studying and photographing every aspect of the farm operation, to take what they learned back to Japan.

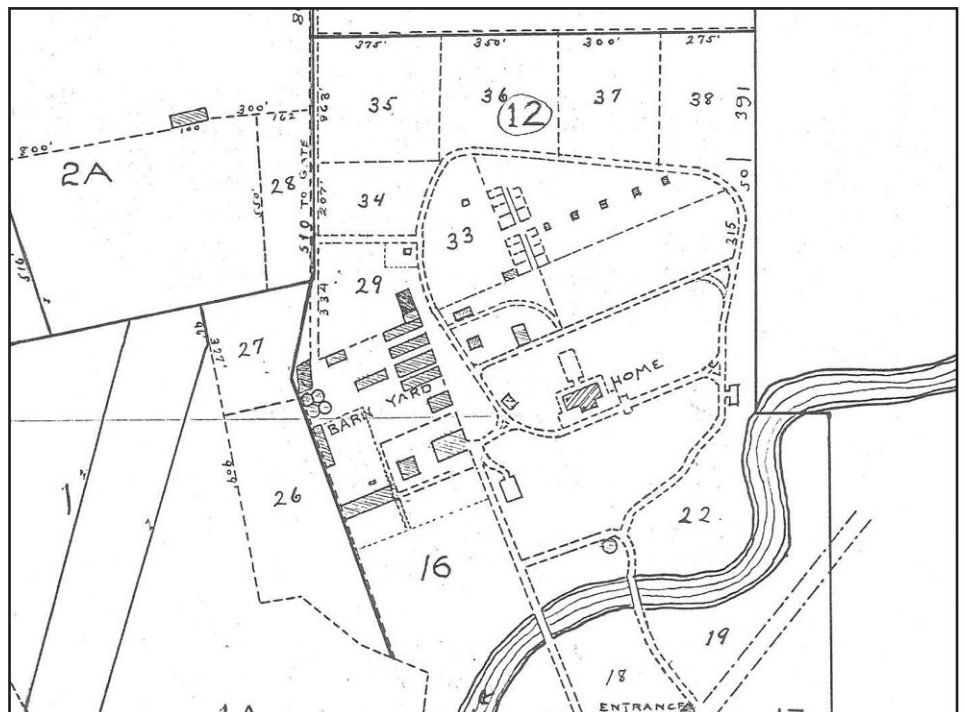
Clise worked extensively with Washington State Agricultural College (WSU today) on developing new and improved farming methods, as well as new ways to make working conditions and life better for farmers. As part of these experiments, Clise set aside several small lots (numbered below) in an effort to get more yield from various feed production methods and other farm staples. Clise would receive an honorary master's degree for his work.

**Anna Clise**, James's wife, was a collector of orchids, and raised 604 types in the four greenhouses east of the house. She received a bronze medal from the Harmon Foundation Incorporated of New York City for her essay entitled "The Orchid." By this

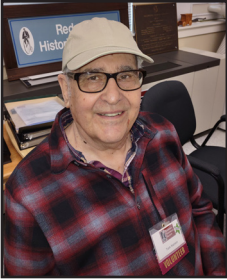
time, she was nearly blind from glaucoma when she received honors for printing two books in braille that were accepted by the National Library for the Blind in Washington D.C.

In 1907/1908, Anna founded Children's Orthopedic Hospital (today's Children's Hospital). Many of her fundraising activities were held at Willowmoor Farm as part of her organizational work. In 1989, she was enrolled on the Washington State Historical Society Centennial of Honor for her efforts.

By 1915, the barnyard and grounds had changed significantly. We will discuss this in more detail in the next issue of this newsletter.



1915 map of Willowmoor Farm. Source: Authors collection



## MOM PHONES DOCTOR WAY

By Tom Hansen, Lifetime Member

In the summer of 1946, my mother, **Lucille Hansen**, participated in a Redmond historical event. She told me this story years later, because at the time I was five, asleep during this episode. The basic story is true, but I've embellished it for more complete coverage.

The summer was hot in the old Weber farmhouse my parents bought. Their bedroom on the second floor faced the East Lake gravel road and the railroad tracks beyond.

One night, shortly after two in the morning, my folks were awakened by a loud crash and felt they should investigate. Crossing the gravel road, they saw an early-1930s car standing on its grill straight up over the ten-foot embankment with the rear sticking up about four feet. Dad scrambled down the steep terrain and found an elderly man's head stuck through the windshield bleeding. He yelled, "Call the doctor!" Mom had Doctor Way's phone number.

Contacting the doctor, Mom related the situation and became irate giving directions. "Don't go into Redmond, it's East Lake Sammamish, not West Lake."

Mom stood in the middle of the road as headlights appeared. The doctor drove onto the shoulder near the standing vehicle. He scurried down beside the old car and opened the driver's door, pulling the old guy out with Dad pushing from outside. They managed to work the limp body down to the railroad tracks. Doctor Way scrambled back up the embankment to his car, and made a U-turn to the gravel entrance down across the



Hansen family in front of the old Weber house, undated. Photo: RHS Archives

tracks, jerking his car around to face up for an exit. He opened the front passenger door and jogged back towards the victim. Dad and the doctor carried the old guy to the front seat of the doctor's car. The car door was slammed shut, and Doctor Way became 911 to the Kirkland hospital; the emergency room that was open all night. The man was in his early eighties and died two days later; luckily, his family was in attendance.



Dr Way, Army Air Corps WWII. John D. Way attended the University of Kansas Medical School. He traveled to the Pacific Northwest to escape the cold Kansas weather and fell in love with the area.

What happened that morning? The old fellow lived on the East Lake Sammamish Road North and would go into Redmond to have beer in the evening with friends. By early morning he would end up at Weber Point. His familiarity would guide him onto that gravel road. He was drowsy but drove on. Arriving at Weber Point, his right foot slipped off the gas pedal, so his car eased ahead at a walking pace. He was aware of his fatigue and clutched the steering wheel over the top, right hand firmly to the far left of that wheel. He fell over to his right still gripping the wheel. The slow-moving auto took an abrupt right-hand turn and went over the ten-foot embankment to the tracks below. The crashing stop sent the old guy's head through the windshield, resulting in cuts and bleeding.

About a week later, on a Saturday morning, all the area residents converged on Redmond to shop because the stores all closed at noon. Mom, Dad, and me were in town when Doctor Way saw my mother and approached our family. "I want to thank you for your directions, you were right." Mom was embarrassed, the good doctor continued to visit our family, a funny introduction to the first doctor to Redmond.

The Way family settled in Avondale, but some years later moved to Weber Point down on the water in a new house. In 1962, my Dad died of a heart attack in the spring. Mom phoned Doctor Way again, but this time no directions were needed.



## REDMOND HISTORICAL SOCIETY ICE CREAM SOCIAL & MEMBERSHIP MEETING

By Paige Norman



Maple in snow, 2019. Photo: Paige Norman

## REDMOND HISTORICAL SOCIETY ICE CREAM SOCIAL & MEMBERSHIP MEETING



**Saturday, January 10th, 2026**

Doors open at 2 pm

**Happy Valley Grange**

19720 NE 50th Street | Redmond, WA 98053

Come celebrate the New Year with the Redmond Historical Society! All current, past, and future members are invited to join us for a recap of 2025, and a look ahead toward 2026! Invite your friends, and introduce them to the Society – a great way to connect with our community, and to discover, preserve, and share Redmond's unique history!

Join, renew, or upgrade your membership, win a fabulous raffle prize, catch up with friends, and have dessert.

Look for our postcard invitation in the US Mail! RSVPs are appreciated through our website at [Redmond Historical Society](https://redmondhistoricalsociety.org), or by calling our office at (425) 885-2919.

## WILLIAM H. WHITE – A LEGACY OF LAW AND JUSTICE

### Chapter 4: The Judge Takes a Wife

By Paige Norman with Tom Hitzroth

This is the fourth installment in a five-part series about Justice William H. White, and his life dating from the Civil War to his time in Redmond, to his time as Washington Supreme Court Judge in the early 1900s.

By 1896, Justice William H. White was Chairman of the Washington Delegation for the Democratic Party. During the Civil War, Justice White's politics swung from the Democratic leanings of his West Virginia family to Republican. It was reported that he walked on crutches to cast his vote for President Abraham Lincoln's reelection campaign in 1864.

The judge's principles continued to be greater than any party preference, and he again switched affiliations after a differing opinion from the Democratic policy on the [Philippine decision on Imperialism](#). In a letter to the *Seattle Post-Intelligencer*, he wrote: "The present attitude of the majority of the Democratic leaders now say that it is commercial greed only that demands the retention of these [Philippine] islands, as if for the first time in our history the commercial reason has been invoked for the acquisition of new territory." (*Seattle Post-Intelligencer*, September 12, 1900)



Emma McRedmond White \*  
Justice William H. White.  
Photo: Diana Gardner Morelli Collection

Judge White and [Luke McRedmond](#) were frequently mentioned in news articles as Democratic delegates, or at various political events, as well as in talks and workings of the Northern Pacific Railroad Company (NPRR). Emma states in her deposition for Widow's pension, that she 'knew him

from childhood' and that her father was instrumental in inducing Judge White to come from Seattle to Redmond and to file for a homestead. Judge White had been a single man for most of his life, after a brief, and annulled marriage during his Civil War service, but on September 27, 1898, Emma Frances McRedmond and William Henry White were joined in marriage in Seattle. Judge White was 56 years old, and 27 years her senior; they remained married until his death.

Judge White and his new bride moved into the Hotel Redmond and purchased the remaining acreage of Luke's original properties from his brother-in-law, David McRedmond, on October 31, 1898, increasing his property holdings to nearly 320 acres between Avondale and Redmond.

State of Washington, County of King,		No. 7761	
<b>Marriage Certificate</b>			
This Certifies, That the undersigned <i>P. J. Profontaine</i> by authority of a License bearing date the <i>24<sup>th</sup></i> day of <i>Sept</i> A. D. 189 <i>8</i> , and issued by the County Auditor of the County of <i>King</i> did, on the <i>27<sup>th</sup></i> day of <i>September</i> A. D. 189 <i>8</i> at the <i>my residence Seattle</i> County and State aforesaid, join in lawful wedlock <i>William H. White</i> of the County of <i>King</i> and <i>Emma McRedmond</i> of the County of <i>King</i> with their mutual assent, in the presence of <i>David McRedmond</i> and <i>Mrs. J. L. Kane</i> Witnesses.			
In Testimony Whereof, Witness the signatures of the parties to said ceremony, the Witnesses and myself, this <i>27<sup>th</sup></i> day of <i>September</i> A. D. 189 <i>8</i>			
Witnesses: <i>David McRedmond</i> <i>Mrs. J. L. Kane</i>		Parties: <i>William H. White</i> <i>Emma McRedmond</i>	
Filed <i>JAN 11 1899</i>		Officializing Clergyman or Officer: <i>P. J. Profontaine</i> <i>Sec. District 3rd Cir 18th</i> <i>Seattle</i>	

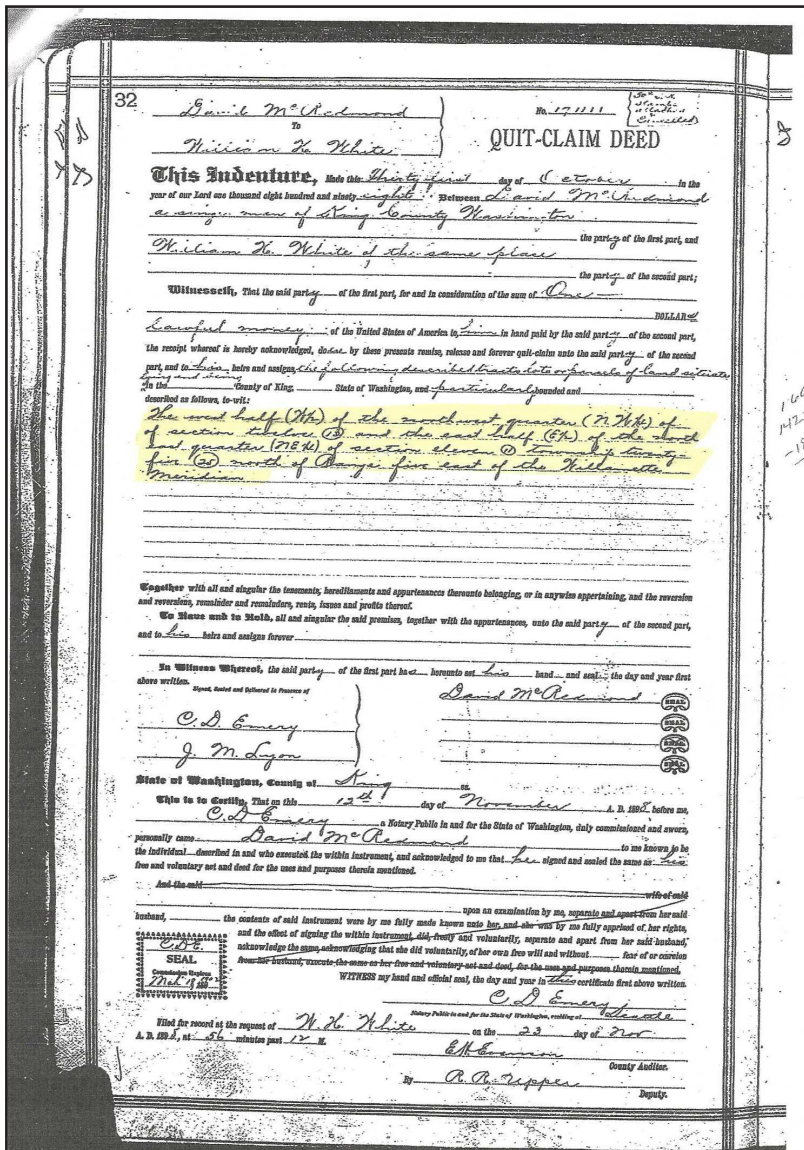
Marriage Certificate for Emma McRedmond White & Justice William H White.  
Image: Family Search website



Judge White and Emma raised daughters [Martha White Gardner Sick](#) (1899-1992), [Dorothy White Hanscom](#) (1903-2002), and Ruth

White Eacrett (1906-1980) in the Hotel Redmond, hosting countless parties, dances, and social events.

In our final chapter, we review Judge White's lasting legacy in Redmond.



1898 McRedmond–White deed.  
Source: Tom Hitzroth Collection

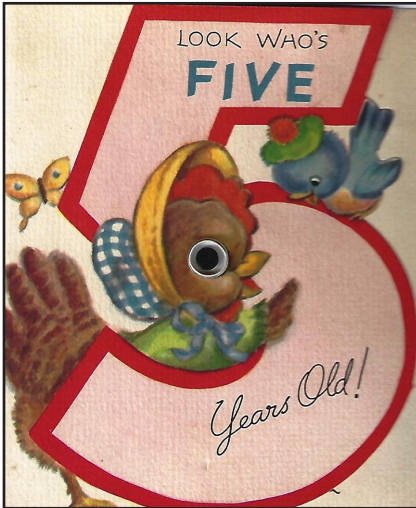


Dorothy White's 10th Birthday Party at the Hotel Redmond.  
Photo: Diana Gardner Morelli Collection



Justice William Henry White & Daughter, Ruth.  
Photo: Diana Gardner Morelli Collection

## MEMBERSHIP BIRTHDAYS



### DECEMBER

JoAnn VanderKooi	December 13th
Marion Northrop	December 18th
Ben VanderKooi	December 18th
Douglas Jossi	December 23rd
Rachid Erekaeni	December 30th

### JANUARY

Barbara Armstrong Johnson	January 2nd
Fran Stray	January 3rd
Bob Yoder	January 5th
Noriko Riggelman	January 12th
Robin Wardstrom	January 14th
Mark Tollfeldt	January 17th

Donna Bailey	January 18th
Carol Ann Mills	January 18th
Gail Cerra	January 20th
Martha O'Keefe	January 26th
Eveline Konig	January 29th
George Schaible	January 31st

### FEBRUARY

Eric Pearson	February 5th
Ben (Bruce) Nelson	February 7th
Chris Trewin	February 14th
Edward Weiss	February 18th
Elaine Etzler	February 20th
Mary Fowler	February 22nd
Bob Giuntoli	February 24th

If you'd like us to recognize your birthday in this newsletter, please complete the information on your membership renewal form, or email: [membership@redmondhistoricalsociety.org](mailto:membership@redmondhistoricalsociety.org).

## OUR SOCIETY LIFETIME MEMBERS

**Deb Akerstrom**  
**Robert Akerstrom**  
**Sharon Freeman, Ballisty**  
**Louise Graep Barnes**  
**Laura Lee Bennett**  
**David Best**  
**Gail Cerra**  
**John and Jay Cogan**  
**David Ian Costanzo**  
**Marjorie Costello**  
**John Couch**  
**Cory de Jong**  
**\*John Dixon**  
**Sally Jo Eberhardt**  
**Elaine Sween Etzler**  
**Don and Mary Fowler**  
**Frank Garbarino**  
**Peggy Garbarino**  
**Madeleine Roberts Hagen**  
**Tom Hansen**  
**Mary Hanson**  
**Jerry Hardy**  
**Chris Himes**  
**Linda (Yoshitake) Hussey**  
**Duane Isackson**  
**Rosemarie Ives**  
**Patricia Weiss Jovag**

**Dean Jowers**  
**Barbara Weiss Joyce**  
**Allen Lang**  
**Judy Aries Lang**  
**Judith M. Lankford**  
**Miguel Angel Llanos**  
**\*Cheryl Strong Magnuson**  
**\*Gene Magnuson**  
**Jon M. Magnussen**  
**Dorothy Matsui**  
**Lorraine Isackson Mills**  
**Diana Morelli**  
**Gardner Morelli**  
**McRedmond Morelli**  
**Panfilo Morelli**  
**Allison Reed Morris**  
**\*Paige Roper Norman**  
**\*Russ Lewis Norman**  
**Jackie Norris**  
**Thaddeus Norris**  
**Edward O'Brien**  
**Deborah Oftebro**  
**John Oftebro**  
**Elly Parran**  
**Dale Potter**  
**Jo Ann Potter**  
**Bobbie Graep Rettig**

**\*Noriko Riggelman**  
**Dave Rockenbeck**  
**Laurie M. Rockenbeck**  
**Margy U. Rockenbeck**  
**William Rockenbeck**  
**Doris Bauer Schaible**  
**Dick Shinstrom**  
**Karen Snapp**  
**Frederick Springsteel**  
**Karla Stalwick**  
**Beryl Standley**  
**John C. Stilin**  
**Sherry B. Stilin**  
**Larry O. Sundholm**  
**Kris Swanson**  
**Subhadra Terhanian**  
**Doris Townsend**  
**Joe Townsend**  
**Patricia Trepanier**  
**Roger Trepanier**  
**Sue-Lynn Walsh**  
**Patti Simpson Ward**  
**Donald Glenister Watts**  
**\*John Wayland**  
**\*Kristina Wayland**  
**Joanne Westlund**  
**James Windle**

An asterisk (\*) indicates Family Lifetime members. A full listing of Lifetime Members, both current and in memoriam, is available at [redmondhistoricalsociety.org](http://redmondhistoricalsociety.org).





**REDMOND  
HISTORICAL  
SOCIETY**

## REDMOND HISTORICAL SOCIETY 2026 MEMBERSHIP

*Every town has a history. Discover ours.*

### LEVELS OF MEMBERSHIP (Check one only)

<b>Trailblazer/Student</b> (1 member)	<b>\$5</b>	_____
<b>Pioneer/Individual</b> (1 member)	<b>\$25</b>	_____
<b>Homesteader/Family</b> (2 members)	<b>\$40</b>	_____
<b>Visionary/Business</b>	<b>\$250</b>	_____
<b>History Maker/Lifetime</b> (1 member)	<b>\$1,000</b>	_____
<b>Legacy/Family Lifetime</b> (2 members)	<b>\$2,000</b>	_____

☐ I'd like to be a Sustaining Partner through annual donations in addition to my membership.

Membership Name(s): 1) \_\_\_\_\_ 2) \_\_\_\_\_

Address: \_\_\_\_\_ Unit# \_\_\_\_\_

City: \_\_\_\_\_ State: \_\_\_\_\_ Zip: \_\_\_\_\_

Phone: \_\_\_\_\_ Email: \_\_\_\_\_

Birthdate Member 1 \_\_\_\_\_ mm/dd/yy (optional)

Birthdate Member 2 \_\_\_\_\_ mm/dd/yy (optional)

☐ Address Change ☐ New Member ☐ Renewal ☐ Gift membership

☐ New to Redmond ☐ I am interested in being a volunteer

**Memberships make great **GIFTS** for kids, grandkids, and friends.  
Share the Redmond Historical Society with everyone on your list!**

**PLEASE MAKE CHECKS PAYABLE TO:**

**REDMOND HISTORICAL SOCIETY**

**16600 NE 80th Street, STE 122, Redmond, WA 98052**

You may also renew or purchase a membership through our website at

<http://www.redmondhistoricalsociety.org>

**The Redmond Recorder**, our quarterly newsletter, is available by email and viewable on our website. You may request a paper copy by contacting our office at

[info@redmondhistoricalsociety.org](mailto:info@redmondhistoricalsociety.org)



**REDMOND HISTORICAL SOCIETY**

Old Redmond Schoolhouse  
16600 NE 80th Street, Room 122  
Redmond, WA 98052

**MAJOR SPONSORS**

