

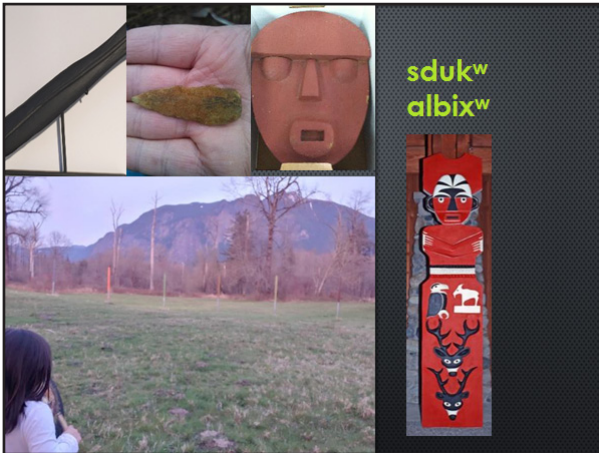


THE REDMOND RECORDER

REDMOND HISTORICAL SOCIETY NEWSLETTER
OCTOBER 2021 • VOL. 23 • NO. 9

Every town has a history. Discover ours.

VIRTUAL SATURDAY SPEAKER SERIES: ‘THE SNOQUALMIE TRIBE: A BRIEF HISTORY OF THE LAKE SAMMAMISH AREA’



“People of the Moon,” or sduk^walbix^w. Image: Snoqualmie Tribe

Redmond Historical Society and the Snoqualmie Tribe partner to host a special conversation with **Steven Moses**, Director of Archaeology and Historic Preservation for the Snoqualmie Tribe. Join us on October 9, 2021 as he explains the Indigenous connection to the north Lake Sammamish area from 13,000 years ago to today—and how by working together, we can preserve our shared history of the Pacific Northwest. For details and to register, see p. 4.

-
- President **John Oftebro** contemplates “heavy lifting for the light rail,” p. 3.
 - **Tom Hitzroth** looks at Redmond’s early streets in the Redmond Mapping Project – Phase II, p. 6.
 - Society honors **Frank and Miye Yoshitake** for a lifetime of service, p. 8.

2021

BOARD OF DIRECTORS

OFFICERS

John Oftebro • President
Laura Lee Bennett • Senior Vice President
John Watson • Vice President Finance, CPA
Open • Vice President Collections
Deborah Oftebro • Secretary

DIRECTORS AT LARGE

Ed "Dint" O'Brien
ChuNi Kao
Judith Simpson
Open • Marketing and Branding Chair
Paige Norman
Jo Ann Potter
Sue-Lynn Walsh

ADMINISTRATIVE & COLLECTIONS MANAGER

Halee P. Turner

ATTORNEY • Charles Diesen

Our finances are public record and may be viewed at the office.

NEWSLETTER EDITOR

Christine Clark

GRAPHIC DESIGNER

Teresa Potter • Urban Dakota Creative

FREE NEWSLETTER

If you don't subscribe, please sign up.
Call the office at **425.885.2919** or email info@redmondhistoricalsociety.org.
State your preference of email or U.S. Mail.
The Historical Society prefers email as it's inexpensive and photos are enhanced online.

FIND US ON FACEBOOK:

<https://www.facebook.com/Redmond.Historical.Society/>

THE REDMOND RECORDER

is published ten times annually.

PHONE 425.885.2919

ADDRESS 16600 NE 80th Street
Redmond, WA 98052

WEBSITE redmondhistoricalsociety.org

EMAIL info@redmondhistoricalsociety.org

HOURS Please contact the office to schedule an appointment

SOCIETY NEWS

SOCIETY SEEKS VOLUNTEERS

The Redmond Historical Society actively collects, preserves, and displays artifacts from Redmond's past. Are you interested in volunteering with us? Currently, we need volunteers for the **Redmond Saturday Market booth on October 23**, and there are two volunteer Board Member opportunities:

- **Vice President, Collections**
- **Marketing and Branding Chair**

Please see page 9 for more details.



Sotheby's
INTERNATIONAL REALTY

Society Partners with Sotheby's International Realty

Marketplace Sotheby's International Realty brokers **Cynthia Olsen** and **Mary Sullivan** have formed a unique partnership with the Redmond Historical Society in an effort to help raise money for the Society. Sotheby's International Realty will give 10% of commissions to support the Redmond Historical Society when you or someone you refer is looking to buy or sell property. Marketplace Sotheby's International Realty established this program as a way to give back to organizations that are committed to the welfare of our communities. For more information, contact Cynthia Olsen at cynthia.olsen@sothebysrealty.com, 425.877.9904, Mary Sullivan at mary.sullivan@sothebysrealty.com, 425.449.2841, or call the Society Office at 425.885.2919.



HEAVY LIFTING FOR LIGHT RAIL!

By John Oftebro

This huge crane is busy doing some “heavy lifting” for the light rail that will be opening two stations in Redmond, 2024. It will be preceded by the 2023 station openings in Overlake and Redmond Technology (Microsoft campus)!

While one new station will serve Marymoor Village near Marymoor Park, the final stop is in the downtown core area, just a block away from the Justice White House. Redmond’s first railroad, the Seattle Lake Shore and Eastern depot, was just across the street from there when it opened in 1888.

In 1894, the Ernest Adams family moved to Redmond as he was the District Supervisor for Northern Pacific. The family with their four children lived in the depot for a time, which was likely very exciting for the children. Northern Pacific took over the rail line in 1901 and eventually it was purchased by Burlington Northern.

This new rail service in 1888 cut down the two-to-three day steamer travel time up the Squak (Sammamish) River. It provided freight service to Redmond and an efficient method of getting logging industry products to market. Over the years the logging industry



Photo: John Oftebro, September 2021

faded, but steady rail use supplying grains for the T-D Feeds remained a constant use of the lines.

The Redmond Depot closed in 1970 after 80 years of service to the community. You can see what it looked like by visiting our [website](#) and typing [Railroad](#) in the **Keyword Search in the Digital Archives** section under **Research Resources**. There are several interesting stories there to give you a feel for life in Redmond back in the day.

Here we are today, waiting now for the new Link Extensions, ~133 years after Redmond’s first railroad. Soon we can travel easily to Bellevue, Downtown Seattle, Northgate, or Sea-Tac Airport in style!

‘THE SNOQUALMIE TRIBE: A BRIEF HISTORY OF THE LAKE SAMMAMISH AREA’

Indigenous peoples of this area have called the Lake Sammamish Area home for at least 13,000 years, notes **Steven Moses** in his presentation, “The Snoqualmie Tribe: A Brief History of the Lake Sammamish Area.” Moses touches on recent archaeological discoveries in Bear Creek and its significance as a fish habitat. Moses also discusses ways for our communities to work together in order to preserve our shared history of the Pacific Northwest.

Steven Moses (he/him) is a member of the Snoqualmie Tribe and the Director of Archaeology and Historic Preservation and has been involved in cultural resource protection for 16 years. Moses has negotiated numerous Memorandum of Agreements with multiple federal and state agencies.

The Snoqualmie Tribe—“People of the Moon,” or *sdukʷalbiw* in the Native language—consists of a group of Native American peoples from the Puget Sound region of Washington state. The Snoqualmie Tribe is made up of approximately 650 members. The Snoqualmie are also known as the Snoqualmu, Snoqualmoo, Snoqualmick, Snoqualamuke, or Snuqualmi.



Steven Moses holding a boot from the 1890s, during construction of the new SR 99 tunnel.

Their autonym is *Sduk-al-bixw*, meaning “strong people of status.”

Time and Date: October 9, 2021
10:30 AM Pacific Time (US and Canada)

Registration is required. To sign up for this free online presentation, please register at <https://tinyurl.com/4n5jvxfy>.

For more information, visit www.redmondhistoricalsociety.org.



‘UNTOLD STORY’ OF THE DUWAMISH RIVER: A CALL TO ACTION

By Laura Lee Bennett

On September 11, author and Humanities Washington speaker **BJ Cummings** gave an impassioned talk to more than 75 attendees, focusing on the history of the Duwamish River and its people. The presentation was a call to action and an appeal for environmental justice.

Cummings, a self-proclaimed “river junkie,” shared excerpts from her book, *The River That Made Seattle: A Natural and Human History of the Duwamish*. She wove a compelling tale of the transformation of Seattle’s only river—once a great watershed with many tributaries, teeming with “salmon and fertile plains,” first home to indigenous people and then white settlers—into an industrialized estuary filled with waste from factories on its banks, and polluted stormwater from Lake Washington. The Lower Duwamish Waterway was declared a Superfund cleanup site by the EPA in 2001.

A recording of the program is available for one month at youtu.be/5xSrZ_UNQEw.

Special thanks to **Halee Turner** for hosting the webinar, and **Margy Rockenbeck** for moderating the Q&A.

Questions, comments? Please submit them to manager@redmondhistoricalsociety.org.

Further Information

BJ Cummings is founder of the [Duwamish River Cleanup Coalition](#) and previously served as executive director of [Sustainable Seattle](#). Her book is available through local and independent bookstores, and at the [Duwamish Longhouse Store](#).

Current status of the river cleanup is in *The Seattle Times*: “[On the 20th anniversary of its Superfund listing, the Duwamish River faces a triple threat](#),” by Paulina López, James Rasmussen, and BJ Cummings.

Take Action

The vibrant and ethnically diverse communities around the Lower Duwamish have become “fence-line communities”—neighborhoods negatively impacted by pollution from adjacent manufacturing and industrial areas. Today, residents are advocating and working for environmental and infrastructure changes to improve their health.

To support these community-driven initiatives, contact [Duwamish River Cleanup Coalition](#).

Visit the [Duwamish Longhouse & Cultural Center](#) and the [he?apus Village Park & Shoreline Habitat](#) (formerly Terminal 107 Park) to view the habitat restoration and art installations that represent these initiatives.

REDMOND MAPPING PROJECT – PHASE II

By Tom Hitzroth

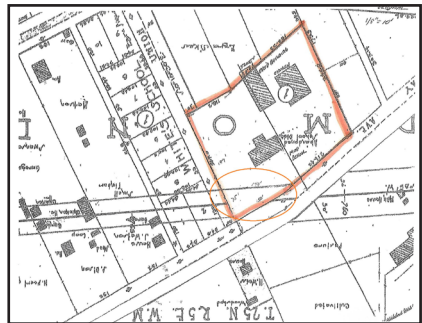
In the [November, 2019 issue of this newsletter](#), I introduced the Redmond Mapping Project. The intent was to locate and verify the original plat and lot lines, and building sites from 1871 to 1925. Using plat maps, fire insurance maps, historic photographs, and other documents, I was able to put Redmond back in its original configuration—much like piecing together an intricate jigsaw puzzle.

I expected the project to take a minimum of five years, since I could only use the quiet of the early morning weekends in the spring to early fall to do the work. During the pandemic, however, I was able to do the mapping five to seven days a week for two or three hours a day. Often there was no one out there but me and the occasional coyote. This enabled me to finish the project in May of this year.

I moved directly into Phase II, which is land east of 164th Ave NE. This is the early land claim area for Melrose (an early name for Redmond) and the sites of the log school, early roads, the schools in today's Anderson Park, and other historical features. The work in this phase is much more challenging. Since I'm studying a land claim

area, I'm using early maps of from the King County Road Service Division, maps showing boundaries of land claims, explanatory descriptions contained in the individual land claim files I have, and other documents. The landscape has changed dramatically—roads now run through some of the early claims, requiring a close review to put land claim lines and road lines back where they once were. In fact, Cleveland Street was only 15 feet wide in 1885 (see map).

Once this phase is completed, we will have a better understanding of the sequence of development of Redmond in its earliest days.



Circled: Area of land removed from the original lot when Redmond Way was built in 1928. Cleveland Street is 15 feet wide in 1885.

Source: Author's collection

RESEARCHING REDMOND: A TIMELINE OF REDMOND'S FIRST 100 YEARS

By Halee Turner

Have you explored the [Society Blog](#) or the Research Resources tab on RedmondHistoricalSociety.org? These sections highlight interesting stories from Redmond's past, provides access to our digital collection, and more! The first section under this tab is a "[Redmond History Overview](#)" which boasts an expansive timeline of Redmond's first 100 years.

As 2022 is just a few months away, let's look back at some notable events from years past.

1912: Redmond qualifies for incorporation by King County, and officially becomes a town on December 31

1922: First phase of Red brick school completed on NE 80th Street. Several additions and modifications have been made since.

1932: Seven men band together to fight fires, and the next year buy a 1,000 gallon tanker

1942: Bicycle Derby festivities cease temporarily, and resume after World War II

1952: Eastside Mayors compete in a bicycle race during the Bike Derby. The winner is dunked.

1962: Seattle holds the "Century 21 Exposition", also known as the Seattle World's Fair.



Theno Brothers ride plastic cow, ca. 1980.
Photo: RHS Archives

1972: The "Friends of the Redmond Library" forms.

1982: A new post office building is completed and opens on NE 85th Street

1992: The last issue of the *Sammamish Valley News* is printed.

2012: Theno's Dairy closes permanently after 70-years of business.

FRANK & MIYE YOSHITAKE: A LIFETIME OF SERVICE

Frank & Miye Yoshitake moved to Redmond in the summer of 1955, looking for “good soil” and a place to call home. Frank & Miye purchased land on Avondale Road and built their home on the property as well as Sunset Gardens Nursery.

Frank built Lil’ Augusta Golf Course on the property, a par 3, 18-hole course, beautifully landscaped with specimen and fruit trees throughout. It wasn’t unusual for golfers to pick an apple, Asian pears, or berries while golfing.

Frank accumulated much of his landscaping experience at Minidoka Relocation Camp, building a 6-hole, par 23 course with fairways covered in dirt and sagebrush.

Frank was connected with other local courses, including the Carnation Golf Course (now The Blue Heron Golf Club).

Daughters Teresa (Hall), Sharon (Gilbert), and Linda (Hussey) attended Redmond schools and participated in Girl Scouts. Miye served on the Redmond Parks & Recreation Board and was active in garden clubs, including Marrowstone Garden Club on Marrowstone Island. “Yoshitake’s Garden” is commemorated with a plaque as you enter Marrowstone Island.

In October 2004, Frank, Miye, their children, and grandchildren dedicated Sunset Gardens Park on Avondale Road. Daughter Linda Hussey purchased a Lifetime Membership “In Memoriam”, continuing to recognize a lifetime of service from her parents.

More links, photos, and articles about Frank & Miye are on our website at www.redmondhistoricalsociety.org/post/frank-miye-yoshitake-a-lifetime-of-service

For more information on becoming a member of Redmond Historical Society, please see our membership page on our [website](#).



320 HOURS IN AUGUST By Jo Ann Potter

A big WELCOME to our newest volunteer, Mary Horabik. She comes to us with experience in museums and is interested in the cataloging of artifacts. We look forward to using her expertise.

Sue Lynn Walsh, Linda McCrystal, Laura Lee Bennett, Judy Lang, John Watson, and Jo Ann Potter helped at the Saturday Market counting folks with a clicker at the entrance. They also asked questions for a brief survey to assist the Market apply for a grant.

A VOLUNTEER VOICE

“Asking questions for a Redmond Saturday Market survey is not exactly my thing, but everyone I approached was willing to answer – no one refused. Then we got chatting about where they lived, how great the new venue for the Market is, the luscious fruits, vegetables and gorgeous flowers, etc., etc. I felt so much a part of my home town Redmond community and it was really fun!”

-Jo Ann Potter

SOCIETY SEEKS VOLUNTEERS

On Saturday, October 23, RHS is going to once again have a booth at the Saturday Market and needs volunteers! Sound fun? Please email Jo Ann Potter directly at volunteercoordinator@redmondhistoricalsociety.org to let her know that you are interested and available. This will be our last presence at this wonderful community event for 2021.

The Society also has the following two volunteer Board Member opportunities open:

VICE PRESIDENT, COLLECTIONS This volunteer role requires participation in the Executive Committee and Board of Directors, and acts as chair of the Collections Committee with staff support.

MARKETING AND BRANDING CHAIR We're looking for a volunteer PR maven to help us promote RHS. Our objective is to raise awareness of the Society in the community about the benefits of participating in Society events, and supporting the Society through membership, volunteering, and donations. This is a Board of Directors position.

Please visit our [Volunteer Page](#) online today for all of the details on the role and how to apply.

MEMBERSHIP NEWS

HAPPY BIRTHDAY TO YOU!



Alexi Girsh – September 14
James Wilhoit – September 22
Joy Blake – September 25
DeAnna Gilbert – October 2

Robert Swenson – October 6
Jackie Lyons – October 16
Maureen Healy – October 24
Barbara Ostwalt Taylor – October 31

If you'd like us to recognize your birthday in upcoming newsletters, please complete the information on your renewal form or email: membership@redmondhistoricalsociety.org



IT'S TIME TO RENEW!

It's time to renew your membership with the Redmond Historical Society! We have a level for everyone, from Student to Family Lifetime, and Memberships are tax-deductible. **Current memberships expire December 31, 2021.**

If you're not already a member, this is the year to JOIN! **New members joining in October receive 3 FREE MONTHS of membership (through December 2022)!**

You can join by visiting our [website](#), by completing the form in this newsletter on page 11, or by contacting staff during regular office hours at 425.885.2919

Paige Norman
Membership Committee

OUR SOCIETY LIFETIME MEMBERS

Sharon Freeman, Ballisty
Louise Graep Barnes
David Best
John and Jay Cogan
Marjorie Costello
John Couch
Cory de Jong
Sally Jo Eberhardt
Betty L. Emmanuel
Tony Emmanuel
Don and Mary Fowler
Frank Garbarino
Peggy Garbarino
Madeleine Roberts Hagen
Suzanne Hall
Mary Hanson
Jerry Hardy
Chris Himes
Rosemarie Ives
Patricia Weiss Jovag
Barbara Weiss Joyce

Allen Lang
Judy Aries Lang
Judith M. Lankford
Miguel Angel Llanos
*Cheryl Strong Magnuson
*Gene Magnuson
Jon M. Magnussen
Dorothy Matsui
Diana Morelli
Panfilo Morelli
Allison Reed Morris
Edward O'Brien
Deborah Oftebro
John Oftebro
LeRoy Olson
Dale Potter
Jo Ann Potter
Bobbie Graep Rettig
Dave Rockenbeck
Laurie M. Rockenbeck
Margy U. Rockenbeck

William Rockenbeck
Doris Bauer Schaible
Dick Shinstrom
Frederick Springsteel
Beryl Standley
John C. Stillin
Sherry B. Stillin
Fred Stray
Larry O. Sundholm
Subhadra Terhanian
Doris Townsend
Joe Townsend
Patricia Trepanier
Roger Trepanier
Sue-Lynn Walsh
Patti Simpson Ward
Donald Glennister Watts
Joanne Westlund
James Windle

An asterisk (*) indicates Family Lifetime members. A full listing of Lifetime Members, both current and in memoriam, is available at redmondhistoricalsociety.org.



REDMOND HISTORICAL SOCIETY

REDMOND HISTORICAL SOCIETY 2021 MEMBERSHIP

Every town has a history. Discover ours.

LEVELS OF MEMBERSHIP (Check one only)

Trailblazer/Student (1 member)	\$5	_____
Pioneer/Individual (1 member)	\$25	_____
Homesteader/Family (2 members)	\$40	_____
Visionary/Business	\$250	_____
History Maker/Lifetime (1 member)	\$1,000	_____
Legacy/Family Lifetime (2 members)	\$2,000	_____

I'd like to be a Sustaining Partner through annual donations in addition to my membership.

Membership Names: 1) _____ 2) _____

Address: _____ Unit# _____

City: _____ State: _____ Zip: _____

Phone: _____ Email: _____

Birthdate Member 1 _____ mm/dd/yy (optional)

Birthdate Member 2 _____ mm/dd/yy (optional)

- Address Change
 New Member
 Renewal
 Gift membership
 New to Redmond
 I am interested in being a volunteer

PLEASE MAKE CHECKS PAYABLE TO:

REDMOND HISTORICAL SOCIETY

16600 NE 80th Street • Redmond, WA 98052

You may also renew or purchase a membership through our website at
<http://www.redmondhistoricalsociety.org>

The Redmond Recorder is available via email and viewable on our website. You may request a paper copy by contacting our office at info@redmondhistoricalsociety.org.



REDMOND HISTORICAL SOCIETY
Old Redmond Schoolhouse
16600 NE 80th Street
Room 122
Redmond, WA 98052

MAJOR SPONSORS



CULTURE

