

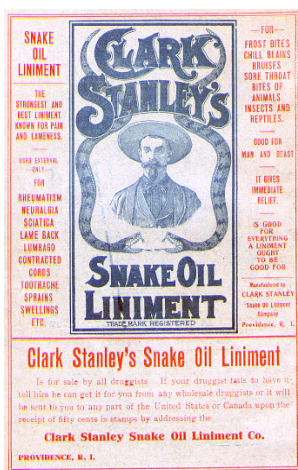


THE REDMOND RECORDER

REDMOND HISTORICAL SOCIETY NEWSLETTER
APRIL 2021 • VOL. 23 • NO. 4

Every town has a history. Discover ours.

VIRTUAL SATURDAY SPEAKER SERIES: ‘FROM SNAKE OIL TO VACCINES: PHARMACY HISTORY IN WASHINGTON STATE’



Ad for Clark Stanley's Snake Oil Liniment, circa 1905

Source: *True Life in the Far West*, 200-page illustrated pamphlet, Worcester, MA

On April 10, 2021, pharmacist and Redmond Historical Society President **John Otebro** presents the history of pharmacy in Washington State. How did prehistoric man prepare salves for wounds? Was there really snake oil in those patent medicines? What were early pharmacies like? Where did the soda fountains go? What happened to Pay 'n Save? Who invented Blistex? Was penicillin the first antibiotic? How did pharmacy education develop? For details and how to register, see p. 4.

- The Society seeks the next “incredible history topic” for the Saturday Speaker Series, p. 3.
- **Tom Hitzroth** looks at **Anna McRedmond Smith’s** boarding house, p. 6.

2021

BOARD OF DIRECTORS

OFFICERS

John Oftebro • President
Laura Lee Bennett • Senior Vice President
John Watson • Vice President Finance, CPA
Rachel Davis • Vice President Collections
Deborah Oftebro • Secretary

DIRECTORS AT LARGE

Ed "Dint" O'Brien
ChuNi Kao
Judith Simpson
Paige Norman
Jo Ann Potter
Sue-Lynn Walsh

ADMINISTRATIVE & COLLECTIONS MANAGER

Halee P. Turner

ATTORNEY • Charles Diesen

Our finances are public record and may be viewed at the office.

FREE NEWSLETTER

If you don't subscribe, please sign up.
Call the office at **425.885.2919** or email info@redmondhistoricalsociety.org.
State your preference of email or U.S. Mail.
The Historical Society prefers email as it's inexpensive and photos are enhanced online.

FIND US ON FACEBOOK:

[facebook.com/Redmond.Historical.Society](https://www.facebook.com/Redmond.Historical.Society)

THE REDMOND RECORDER

is published nine times annually.

NEWSLETTER EDITOR

Laura Lee Bennett

GRAPHIC DESIGNER

Teresa Potter • Urban Dakota Creative

PHONE 425.885.2919

ADDRESS 16600 NE 80th Street
Redmond, WA 98052

WEBSITE redmondhistoricalsociety.org

EMAIL info@redmondhistoricalsociety.org

HOURS Please contact the office to schedule an appointment

SOCIETY NEWS

THANK YOU, GUEST EDITORS!

For the next few issues of this newsletter, we'll be working with a series of "guest editors." This month, we introduce **Taylor Fievez** (p.10). We'd also like to thank **Sue Plahn**, technical writer and editor, who did a marvelous job on the March issue.



Sotheby's
INTERNATIONAL REALTY

Society Partners with Sotheby's International Realty

Marketplace Sotheby's International Realty brokers **Cynthia Olsen** and **Mary Sullivan** have formed a unique partnership with the Redmond Historical Society in an effort to help raise money for the Society. Sotheby's International Realty will give 10% of commissions to support the Redmond Historical Society when you or someone you refer is looking to buy or sell property. Ask Cynthia Olsen, Mary Sullivan, or the Society for details. Marketplace Sotheby's International Realty established this program as a way to give back to organizations that are committed to the welfare of our communities. For more information, contact Cynthia Olsen at cynthia.olsen@sothebysrealty.com, 425.877.9904, Mary Sullivan at mary.sullivan@sothebysrealty.com, 425.449.2841, or call the Society Office at 425.885.2919.



SEARCHING FOR THE NEXT INCREDIBLE HISTORY TOPIC FOR THE SPEAKER SERIES

By John Oftebro

We're finally back in the Old Redmond Schoolhouse and setting up our office, collections, and museum space for our eventual **Grand Opening this summer**. Hooray! During the past year of COVID-19 challenges, we have continued to bring Redmond's history to you via Zoom webinars and have attracted scores of attendees. We're now in the process of planning for next year's season, and we would love your help in providing suggestions for our topics. While we have some programs in mind, we value your feedback and suggestions and ask that you let us know what you would love to hear.

Since 2011 we have presented 92 programs of wide-ranging topics. The following is a sampling of those programs.

- 2011 - David Horsey – Kick-starting a Cartoon Career – *Seattle Times* Cartoonist
- 2012 - Olwen Morgan – History of Rocket Research and Aero-Jet's Work in Space
- 2013 - Tom Hitzroth – Lost Redmond: Once Here, Long Gone
- 2014 - Steve Greaves – Sammamish Slough Races
- 2015 – Dr. Robert Kopperl – The Bear Creek Site: Redmond at the End of the Ice Age
- 2015 - Seng Vue – Flower Farmers of Puget Sound (Hmong family farm)
- 2016 - Timothy Wright – Redmond's Poultry Past: From
- 2017 - Mayumi Tsutakawa – The Pine and the Cherry: Japanese Americans in Washington Family Farms to Global Tables
- 2019 - Tom Bauer – T-D Feeds: Thirty Years of Milling Feeds in Redmond
- 2019 - 'Lyn Lambert – Dudley Carter: Tales of the Legendary Wood Sculptor
- 2020 - Knute Berger – The Fascists in the Forest: Nazis in the Pacific Northwest

Perhaps recalling these programs will stimulate ideas of other local or regional history subjects about people, places, movements or businesses. Please contact us with any ideas you think would be good for our future programs. Call the office 426-885-2919 or email programs@redmondhistoricalsociety.org.

‘FROM SNAKE OIL TO VACCINES: PHARMACY HISTORY IN WASHINGTON STATE’

Travel through time with pharmacist **John Oftebro** as he describes the history of pharmacy—the art or practice of preparing and dispensing medicinal drugs—from prehistoric to modern times. Learn what Pacific Northwest Native American tribes used for remedies, and follow the course of pharmacy as a science through settlement, discoveries, practice changes, and the storefront pharmacies in Washington State. Find out what was really in that snake oil—and how our state led the way for pharmacists to vaccinate across the United States. In addition, learn how local pharmacies have driven the initiative to administer COVID-19 vaccinations statewide—and what lies ahead for pharmacies and pharmaceutical practices.



John Oftebro,
Society President, historian
Retired of Kelley-Ross
Pharmacies in Seattle

Date and time:

April 10, 2021
10:30 AM Pacific Time

Registration is required.

Sign up for this free online presentation at:
<https://tinyurl.com/7yyr4zdz>.

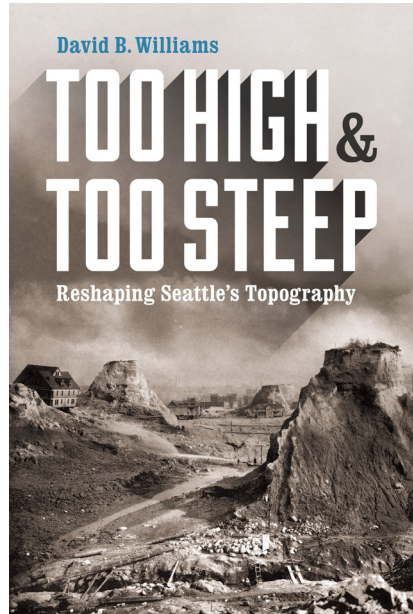
For more information, visit
www.redmondhistoricalsociety.org.

VIRTUAL WALKING TOUR A REAL CROWD-PLEASER

On March 13, author and naturalist **David B. Williams** gave an enthusiastic, informative talk on “Seattle’s Disappearing Hills,” and shared some fascinating photos of the earth-moving and engineering feats that so dramatically “re-sculpted” the downtown of Seattle in the late 19th and early 20th centuries.

Sporting a vest printed with a 1929 map of Seattle and a vintage Kingdome pin, Williams regaled more than 70 attendees with stories of the Denny Regrade projects. Highlights included a video clip of a tug towing a barge full of hill dirt out into the middle of Elliott Bay for “self-dumping,” and Google Earth tours of the walking area downtown, a 1.5-mile rectangle where Amazon’s “Spheres” are located today.

For those of you who joined us for this program—thank you! For those of you who missed it, you can check out the recording on our YouTube channel: <https://youtu.be/Z265st2TMLw>. Video available until April 15, 2021.



Special thanks to **Halee Turner** for hosting the webinar, and **Emma Rockenbeck** for moderating the Q&A.

If you have any questions or comments about the program, please submit them to manager@redmondhistoricalsociety.org.

More information about the author and his available publications can be found at <https://geologywriter.com>.

LOCATING ANNA SMITH'S BOARDING HOUSE

By Tom Hitzroth

On November 25, 1893, **Luke McRedmond** deeded a parcel of land to his daughter **Anna**. Fifteen days later, Anna married **Elmer A. Smith** and together they built a boarding house. Today it would be located partially in the parking lot on the west side of Leary Way, south of Half Price Books.

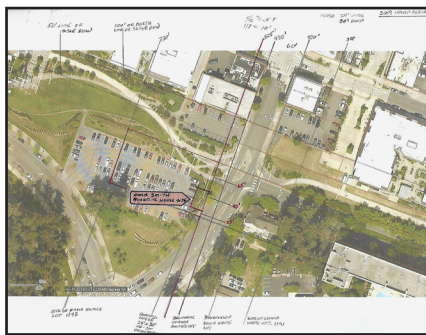
Using the 1893 property description on the deed, the Redmond Plat of 1891, Sikes First Addition Plat of 1897, the Sanborn Map of 1908 as well as maps from the King County Road Services Division, I determined that the front exterior walls of the hotel and the boarding house were an equal distance from the south line of the railroad right of way. Locating the railroad right of way also enabled me to determine how far the boarding house was from the lot line along the west side of Leary Way.

I was able to identify the original elevation of the boarding house

by using the Hotel Redmond for reference. Current landscaping prevented me from using much of my measuring equipment but, knowing the dimensions of the boarding house allowed me to use the map scale to determine the boarding house's exact location (see diagram and resources below).

The ca.1908 boarding house photograph shows a building with a porch and a white picket fence. The photograph from September 27, 1938 shows how the building changed with time. The derelict appearance of the building and lot suggests that by 1938 the boarding house was no longer occupied, being encompassed by the property of the King County Road Maintenance Division.

Finding the location of the boarding house helps us to better understand early Redmond south of the railroad tracks.



Boarding house ca. 1908. Source: Eastside Heritage Center

Map that shows the location of the boarding house. Source: Author's collection



SOCIETY SPONSORS 'REDMOND LOVE NOTES'

In February, the Society partnered with other local organizations to promote an all-ages community writing contest hosted by OneRedmond, "Redmond Love Notes." Entries were judged on originality, use of language, and interpretation of theme. First prize was an overnight stay at the Hilton Garden Inn at Redmond Town Center. The winning poem, a Japanese form called a *tanka*, was posted on social media. We are sharing the poem here in both Japanese and English.

Congratulations to **Keiichi Ohashi** for winning the Redmond Love Notes contest!

winter sky—
looking up
at the golden moon
I remember the warmth
of my beloved



冬の空 黄金に輝く 月見上げ

愛しき君の 温もりを偲ぶ

Fuyu no Sora / Kogane ni kagayaku / Tsuki miage

Itoshiki Kimi no / Nukumori wo shinobu



MEMBERSHIP NEWS

Our members are the heart of the Redmond Historical Society; we're so pleased to have you with us! Welcome to new members **Rachid Erekaïni, Othman Erekaïni, Barbara Ostwalt Taylor, Debbie Boyce,** and **Cheri Taylor!** Also, new Lifetime Member **Patricia Trepanier!**

Tell your friends and family about the Society, talk about the articles in *The Redmond Recorder*, and invite them to join our virtual Saturday Speaker Series!

Memberships make great gifts; purchase one for yourself and a friend! Just complete the application on page 11 of this newsletter and return it to our office, or visit and pay on our website at www.redmondhistorical-society.org/become-a-member.



Virtual Fundraiser “We Love Redmond” Friday, May 7th, 6:30 PM

We're hosting our first ever Virtual Fundraiser and we want to make sure *you* will be with us! Our goal is to raise funds for our new office, continuing to digitize our collection of *Sammamish Valley News*, and preparing our museum space in the Old Redmond Schoolhouse (ORSH). Watch for more information in *The Redmond Recorder*, on our [website](http://www.redmondhistorical-society.org) under “Events,” and through email.

If you'd like to sponsor this event, please contact Paige Norman, John Oftebro, or Halee Turner for details and benefits.
membership@redmondhistoricalsociety.org
john.oftebro@redmondhistoricalsociety.org
manager@redmondhistoricalsociety.org

322 VOLUNTEER HOURS!

Welcome to our new volunteer, **Taylor Fievez**, who will be assisting **Laura Lee Bennett** in editing this issue of the newsletter. **Sue Plahn** helped edit both the March and April issues as well. Many thanks to **Patsy Rosenbach** who supported our Office Manager, **Halee Turner**, in setting up five bookshelves (*not* single shelves—*whole* bookshelves!) of three-hole binders.

Archival materials, negatives and slides, yearbooks, and biographical collections were some of the items that found a new space in the Old Redmond School House. **ChuNi and Tsong-Jhy Kao** shared their expertise on IT issues. **Ismat Jahan, Linda McCrystal, Joe Townsend, and Judy Lang** made phone calls reminding folks to renew their memberships. As usual, President **John Oftebro** was here, there, and everywhere tending to a myriad of details.



Halee Turner and Patsy Rosenbach “make a dent, but a productive one” in setting up the office. Photos: John Oftebro

MEET ‘GUEST EDITOR’ TAYLOR FIEVEZ

Taylor Fievez is a professional copyeditor and proofreader who has her own freelance business. “I am a natural-born bibliophile with a passion for prose and no time to read,” she writes. “As a life-long Washingtonian who has lived on both sides of the mountains (born in the Tri-Cities, currently in Bellingham), I can confidently tell you that life is better among the trees. Although I’ve never lived in Redmond, I thoroughly enjoy reveling in the genuine interest that appears to be so abundant in this Society. I have learned so many interesting things about Redmond and the Pacific Northwest that have situated this area more securely in its history and within the context of its present. I look forward to many more adventures into the past.”

OUR SOCIETY LIFETIME MEMBERS

Sharon Freeman, Ballisty
Louise Graep Barnes
David Best
John and Jay Cogan
Marjorie Costello
John Couch
Cory de Jong
Sally Jo Eberhardt
Betty L. Emmanuel
Tony Emmanuel
Don and Mary Fowler
Frank Garbarino
Peggy Garbarino
Madeleine Roberts Hagen
Suzanne Hall
Mary Hanson
Jerry Hardy
Chris Himes
Rosemarie Ives
Patricia Weiss Jovag
Barbara Weiss Joyce

Allen Lang
Judy Aries Lang
Judith M. Lankford
Miguel Angel Llanos
*Cheryl Strong Magnuson
*Gene Magnuson
Jon M. Magnussen
Dorothy Matsui
Diana Morelli
Panfilo Morelli
Allison Reed Morris
Edward O’Brien
Deborah Oftebro
John Oftebro
LeRoy Olson
Dale Potter
Jo Ann Potter
Bobbie Graep Rettig
Dave Rockenbeck
Laurie M. Rockenbeck
Margy U. Rockenbeck

William Rockenbeck
Doris Bauer Schaible
Dick Shinstrom
Frederick Springsteel
Beryl Standley
John C. Stilin
Sherry B. Stilin
Fred Stray
Larry O. Sundholm
Subhadra Terhanian
Doris Townsend
Joe Townsend
Patricia Trepanier
Roger Trepanier
Sue-Lynn Walsh
Patti Simpson Ward
Donald Glennister Watts
Joanne Westlund
James Windle

An asterisk (*) indicates Family Lifetime members. A full listing of Lifetime Members, both current and in memoriam, is available at redmondhistoricalsociety.org.



**REDMOND
HISTORICAL
SOCIETY**

**REDMOND HISTORICAL
SOCIETY
2021 MEMBERSHIP**

Every town has a history. Discover ours.

LEVELS OF MEMBERSHIP (Check one only)

Trailblazer/Student (1 member)	\$5	_____
Pioneer/Individual (1 member)	\$25	_____
Homesteader/Family (2 members)	\$40	_____
Visionary/Business	\$250	_____
History Maker/Lifetime (1 member)	\$1,000	_____
Legacy/Family Lifetime (2 members)	\$2,000	_____

☐ I'd like to be a Sustaining Partner through annual donations in addition to my membership.

Membership Name(s): 1) _____ 2) _____

Address: _____ Unit #: _____

City: _____ State: _____ Zip: _____

Phone: _____ Email: _____

Birthdate: Member 1 _____ mm/dd/yyyy (optional)

Birthdate: Member 2 _____ mm/dd/yyyy (optional)

☐ Address Change ☐ New Member ☐ Renewal ☐ Gift membership

☐ New to Redmond ☐ I am interested in being a volunteer

PLEASE MAKE CHECKS PAYABLE TO:

REDMOND HISTORICAL SOCIETY

16600 NE 80th Street • Redmond, WA 98052

You may also renew or purchase a membership through our website at

<http://www.redmondhistoricalsociety.org>

Beginning September 2020, *The Redmond Recorder* will be available via email and viewable on our website. You may request a paper copy by contacting our office at

info@redmondhistoricalsociety.org



REDMOND HISTORICAL SOCIETY
Old Redmond Schoolhouse
16600 NE 80th Street
Room 122
Redmond, WA 98052

MAJOR SPONSORS



THE BELLEVUE
COLLECTION™
BELLEVUE SQUARE
LINCOLN SQUARE BELLEVUE PLACE

