



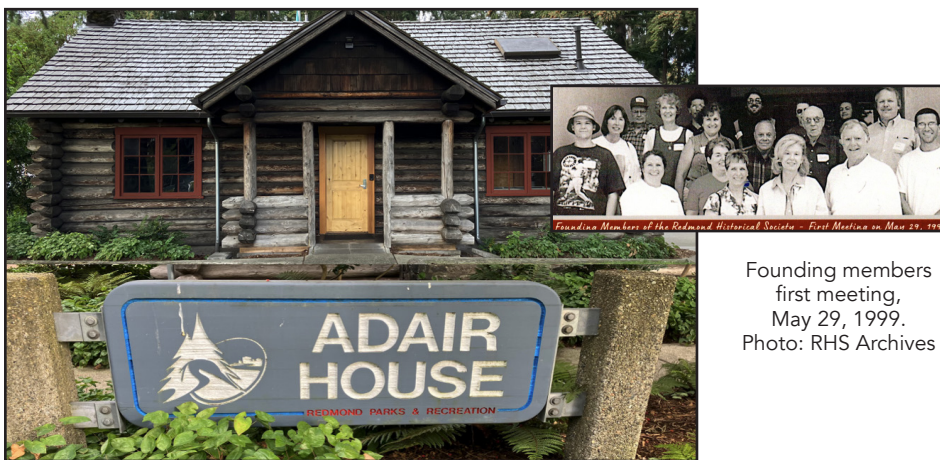
THE REDMOND RECORDER

Every town has a history. Discover ours.

REDMOND HISTORICAL SOCIETY NEWSLETTER

QUARTER THREE • VOL. 28 • NO. 3

SOCIETY RETURNS TO NEW 'OLD' HOME: ADAIR HOUSE IN ANDERSON PARK



Adair Cabin today. Photo: John Oftebro

Founding members
first meeting,
May 29, 1999.
Photo: RHS Archives

We've moved! As of July 1st, 2026, after months of packing and organizing, the Redmond Historical Society has returned to its new "old" home: Adair House in Anderson Park. The move is especially meaningful since, before finding a home in the Old Redmond School House Community Center, the Society held some of its earliest meetings in the historic cabin.

Lifetime Member and Volunteer Coordinator **Jo Ann Potter**, a member of the original board who returned in 2018, recalls: "There were 20 of us sharing stories of our families' histories in Redmond. Several were descendants of pioneer families, including the Perrigos. Led by Naomi Hardy and Miguel Llanos, we started with one table, then two, then three. We were growing!"

The original park land was purchased from the Redmond School District in 1928 for \$1. Additional land was donated by **William E. and Jennie Adair Sikes**. Developed in 1938 through the Works Progress Administration, Anderson Park was Redmond's first public park. It was added to the Washington Heritage Register in 2008 and the National Register of Historic Places in 2009.

For information about visiting us at Adair House, see page 2.

IN THIS ISSUE

- Vice President's Desk, p. 2.
- Volunteer Corner, p. 3.
- "Soccer: History with a Kick," p. 4.
- Society Prepares for Board Elections, p. 5.
- President's Notebook: "Another Stamp Act – A Green One for Loyalty," pp. 6-7.
- Local History: "Willowmoor Farm: Bratnober/ Northwood Period, 1921–1941, Part 1," pp. 8-9.
- Collections News: "Herman S. Reed: The Spark That Kept Things Moving," p. 10.
- Membership Moments, p. 11.
- "Bands Rock Out at Old Fire House Celebration," pp. 12-13.
- Membership Birthdays, p. 14.

2026

BOARD OF DIRECTORS

OFFICERS

John Oftebro • President
 Laura Lee Bennett • Sr Vice President
 Alex Roelofs • Vice President Collections
 VACANT • Vice President Finance
 Deborah Oftebro • Secretary

DIRECTORS AT LARGE

Janet Buerklin
 Eileen Englehart
 Richard Hao
 Paige Norman
 Ed O'Brien
 Jo Ann Potter

ADMINISTRATIVE & COLLECTIONS MANAGER

Halee P. Turner

Our finances are public record and may be viewed at the office.

NEWSLETTER EDITOR

Laura Lee Bennett

COPY EDITOR

Marissa Bea

GRAPHIC DESIGNER

Teresa Potter, Urban Dakota Creative

PROOFREADER

Tom Hitzroth

FREE NEWSLETTER

The Redmond Recorder is published quarterly (Spring, Summer, Fall, Winter). Subscribe to our newsletter at [RedmondHistoricalSociety.org](https://www.facebook.com/RedmondHistoricalSociety.org) or by becoming a member. You will also receive monthly announcements about RHS speaker programs, community events, and other announcements via email or postcard.

FIND US ON FACEBOOK:

<https://www.facebook.com/RedmondHistoricalSociety/>

PHONE 425.885.2919

MAILING ADDRESS Redmond Historical Society
 16625 Redmond Way, Ste. M
 PMB #352
 Redmond, WA 98052

WEBSITE redmondhistoricalsociety.org

EMAIL info@redmondhistoricalsociety.org

HOURS Mon-Wed @ 9:30AM-4:30PM



Laura Lee Bennett,
 VP and Program Chair

WE'VE MOVED—AGAIN!

The Redmond Historical Society has a rich, though somewhat nomadic, history. We've moved several times in recent years, which has kept us agile and skilled in sorting, packing, organizing, and carefully preserving the valuable items in our collections.

Our current space is smaller than the Old Redmond Schoolhouse and offers less square footage and limited climate control, so our museum area has been reduced. Even so, we are committed to making our home as accessible and welcoming as possible.

Meanwhile, the City has offered RHS the Fullard Cabin to store boxes and records, in anticipation of claiming the Adair House in July.

Many thanks to the City of Redmond for providing this space, and to the many volunteers who helped with planning and packing: **John Oftebro, Dale Potter, Joe Townsend, Ely Parran, Janet Buerklin, and Patsy Rosenbach.** A special thank you to our Office Manager, **Halee Turner**, who has overseen the move with grace and patience.



Temporary storage at Fullard Cabin.
 Photo: John Oftebro

Where is RHS located now?

Our new home, the Adair House (also known as "Adair Cabin"), is located by the Community Garden at the south end of the park, along 7802 168th Street NE (see [Map](#)). Our office hours and phone number will be the same. However, public parking is limited. It is best if you call ahead, or email us to make sure we are open and available to serve you.

What happened to the Redmond Bell?

The School Bell, which the Society restored with generous funding from the City, has been bequeathed to the Lake Washington School District, and will stay in its current home—in the hallway at ORSH. It is now landmarked!



Compass Realtors Partner with RHS to Assist with Fundraising

Compass Real Estate Brokers, Cynthia Olsen and Mary Sullivan, have formed a unique partnership with Redmond Historical Society in an effort to help with fundraising for the Society. Cynthia and Mary will donate 10% of their earned commissions to support the Society when members use or refer business that results in a closed transaction. This partnership was formed as a way to give back to organizations that support our communities. Choose real estate brokers who go above and beyond to help with every detail of the buying and selling process, and support the Society! Cynthia and Mary will help you plan, organize, donate, and more—they do it all! Please be sure to say hello to Cynthia and Mary at our next meeting! For more info, contact Cynthia.Olsen@Compass.com, 425 877-9904, or Mary.Sullivan@Compass.com, 425 449-2841.

COMPASS

740 HOURS VOLUNTEERED!

By Jo Ann Potter

Welcome to Eileen Englehart as our Volunteer Coordinator!

Eileen Englehart is currently transitioning into the position of Volunteer Coordinator and will take over all duties in September. She has been a Historical Society member for four years and a Redmond resident for eighteen. Her volunteer experience includes at her church and at the Redmond Senior Center, where she served on the Senior Advisory Committee. The Volunteer Coordinator is responsible for recruiting volunteers for all events, including the monthly Saturday Speaker Series, the Ice Cream Social, and our presence at other community events. She writes welcome letters to new volunteers, records total monthly volunteer hours and reports to

the Board, as well as writing this column. This position serves as a Director-at-Large and attends Board meetings.

Eileen says, "I am an eighteen-year resident, practically a newbie. My volunteer assignments have been with the Redmond Senior Center and at church. I have been a member of RHS for four years and I have always been amazed by the history you have uncovered and by the wonderful speakers you have presented... I look forward to working with the board and the wonderful volunteers in our new home."

Thank you, Eileen, for volunteering in this important position. You are appreciated by all of the RHS members.



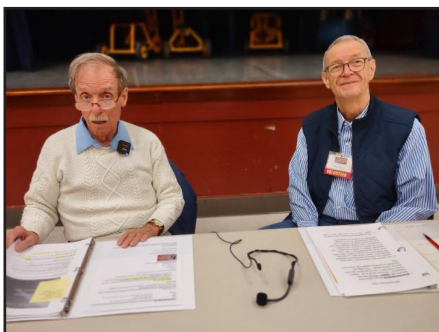
Eileen at the April '26 Saturday Speaker program.
Photo: Cheryl Magnuson

Editor's Note: Thank you, **Jo Ann Potter**, for your passion and dedication in welcoming, onboarding, and coordinating our volunteers. Jo Ann served as Volunteer Coordinator for eight years, from 2018 to 2026, and previously served four years from 2000 to 2004.

HISTORIC THANKS, THE BELL, AND FAREWELL TO ORSH

Many thanks to our Saturday Speaker Series volunteers for their generous time and effort in making each program a success: **Tom Hansen, Sylvia Bernauer, Patsy Rosenbach, Elly Parran, Gene & Cheryl Magnuson, Dale & Jo Ann Potter, Teresa Potter, Alex Roelofs, John & Deborah Oftebro, John Gustaveson, Cynthia Olsen, Mary Sullivan, Richard Hao, and Laura Lee Bennett.**

Editor's Note: April 11 marked our final program at the Old Redmond Schoolhouse. Many thanks to LWSD for the use of their Multipurpose Room.



Presenters Tom Hitzroth with Dean Jowers; "good-bye" cake. Photos: Cheryl Magnuson



The Bell Committee received certificates of appreciation. Photo: Patsy Rosenbach

SOCCER: HISTORY WITH A KICK!

By Marissa Bea

Ah, soccer, the Beautiful Game.

This is the first of our soccer series, which will continue through next year, essentially spanning the months between the [Men’s FIFA World Cup](#) in 2026 and the [Women’s FIFA World Cup](#) in 2027.

Let’s “kick” off with a brief history of soccer in the United States, and in subsequent articles we’ll weave in the history of soccer in Redmond, including stories from locals, RHS members, and maybe more.

Soccer-like sports—that is, kicking, running, and quick decision-making—have an extensive history, and variations of ball-kicking games can be traced back hundreds of years to multiple countries. As we know it today, “association football” (its official name) was invented by the English in 1863. It actually shares its early origins with rugby, but there were a number of schisms related to codes of conduct (those wanting to use their hands vs. feet), and the two sports split early on, with rugby later forming its first official union in 1871.

Like many cultural traditions, soccer was brought to the United States by immigrants, who introduced the game and helped lay the foundation for its growth across the country. Only a few years after soccer was established in England, the first official association football game was played in Waukesha, Wisconsin in 1866 ([US Soccer History –Timeline](#)). While collegiate athletes weren’t fully sold on soccer, it remained popular among immigrant communities, and less than 20 years later, the first soccer league in the US was formed in St. Louis in 1883. Soccer has been played in the United States since the mid-1800s—well before Washington became a state in 1889.

Soccer has a wonderfully colorful history, and Redmond is but a small but mighty part of the largest, most popular sport in the world. We suggest reading or watching more about it (see Sidebar). Nowadays, Redmond boasts some of the strongest youth soccer clubs in the country, as well as the largest soccer complex west of the Mississippi (King County’s Sixty Acres Park).



Image: Sammamish Valley News

Share Your Soccer Story!

Got memories or photos of soccer in Redmond? Email us at programs@redmondhistoricalsociety.org. Your contributions may be added to the Redmond Historical Society archives.

‘Meet Me at Marymoor’ Watch Party July 19

Celebrate with your community! In anticipation of the FIFA World Cup (June 11–July 19, 2026), the City of Redmond has designed and scheduled a wide variety of events and activities with its [Fútbol for All](#) speaker series, watch parties, and more. Join the final event, “Meet Me at Marymoor,” on Sunday, July 19, 10:00 AM–3:00 PM at Marymoor Park for a live World Cup screening, entertainment, food vendors, kids’ activities, and community booths. More info: [Redmond’s Ready for the World](#)

Recommended Reading:
[How Soccer Explains the World](#) by Franklin Foer

Recommended Viewing:
[Bend it like Beckham](#) (2002), directed by Gurinder Chadha

NOVEMBER ELECTION: CALL FOR BOARD VOLUNTEERS



To our Members, Newsletter Readers, Supporters, Donors, and all Redmond Historical Society Stakeholders:

With apologies to Thomas Paine,

These are the elections that try member's generosity. The Speaker Series attendees and the annual donors will, in this election year, sit back from the service of their Society; but she or he that accepts the challenge now, filling essential leadership positions deserves the love and thanks of all Members, and the Redmond community.*

**Time, talent, and treasury, with emphasis on time and leadership talent.*

The Redmond Historical Society has several volunteer opportunities. Currently, some officers have served in dual roles for several terms. Organizations stay healthy through the input of many, each doing a small part. Our continuing as an important entity in the Redmond community depends on you.

This year, the Nominating Committee is preparing a slate of officers for the 2026 election. The commitments are not inordinately time consuming or difficult. Please contact me or any member of the board and tell us how you will be willing to volunteer with the Redmond Historical Society.

*Joe Townsend
Past President, Chair Nominating Committee
joe.townsend@redmondhistoricalsociety.org*



ANOTHER STAMP ACT – A GREEN ONE FOR LOYALTY!

By John Oftebro, with Photos by Business Members

Way back in 1891, a salesman for a department store in Milwaukee, Wisconsin came up with an idea for customer loyalty that evolved into S&H Green Stamps—trading stamps, which my Mom collected in the '50s for a new toaster and other items. At one time there were 100,000 businesses that participated in the program. The real score was to get six booklets filled—that could get you a bicycle—so I was “all in”! Today, there are reward programs that generate more than \$12 billion in economic activity.



Palmer's East



A familiar sign:
S&H Green Stamps

Here at our Society, we have a Loyalty Program that encourages members and guests to support our Business Members whenever the opportunity arises. These local businesses play an important role in sustaining our work, and they welcome your patronage just as they support us. By choosing to do business with them, you strengthen both our local economy and the nonprofit organization dedicated to preserving and sharing our community's history.

Palmer's East has been a Business Member since 2000. This bar and eatery is a wonderful “Gathering Place” on historic Leary Way. Owner **Thomas Wilhite** will likely be there taking care of customers and serving up their delicious fare. Their prime rib on Fridays is a treat, and their karaoke, trivia nights, and sports viewing are crowd favorites. www.facebook.com/PalmersEast



Ben Franklin Crafts & Frames

Ben Franklin Crafts & Frames, owned by second generation of the Ferguson family, has all there is to offer in craft supplies and frames. Special framing for your collectable memories is their specialty. See what brothers **Neil and David Ferguson** and their experienced team can assist you with. www.craftsandframes.com

DeJong Sawdust & Shavings has been around since 1950, and **Cory DeJong** delivered shavings for our horse barn for several years. If you need bark for your yard, they have it for you! www.dejongss.com

Since 1989, **Victor's Celtic Coffee & Roasters** has been a fixture on Gilman Street in downtown Redmond. Today, former barista **Andrea Parrish** owns the beloved café, which continues to serve delicious coffee, baked treats, sandwiches, and freshly roasted beans for home brewing. www.victorscelticcoffee.com

Orca Roofing & Exterior is based in Bellevue and offers complete roofing and gutter service and also deck installation, siding, skylights and more. Sooner or later, you'll need one of these services, so keep this company in mind. www.orcaroofing.com/location/bellevue

OneRedmond, our local "chamber of commerce," supports dozens of small businesses in Redmond. You can't buy anything from OneRedmond, but they can provide vast business support for your small business. oneredmond.org/oneredmond.org

Xplore, Inc., which is a dynamic local company co-founded by **Lisa and Jeff Rich**, now offers "Space as a Service" by providing ultra-high quality hyperspectral images from low Earth orbit for companies and organizations, be it for security, agriculture, infrastructure, transportation, and more. You can't buy their product, but you now know their part in advancing our life here on Earth and beyond. www.xplore.com

EA Pro Painters, a trusted local painting company in Kirkland that specializes in high-quality interior and exterior painting with detail-oriented craftsmanship, brings color, protection, and value to your project. Let them be on the ladders for you, and you'll be grateful. www.eapropainteres.com

Compass Realty: Realtors **Cynthia Olsen and Mary Sullivan** have a unique partnership with our Society, and besides bringing delicious treats to our Speaker Series presentations, they will

donate 10% of their commissions to support the Society when members use or refer business that results in a closed transaction. Cynthia.Olsen@Compass.com, Mary.Sullivan@Compass.com

The Pomegranate is our newest Business Member. If you attended our Saturday Speaker Series in March, you heard owner **Lisa Dupar** share how her fledgling 1984 venture grew into a thriving company known for exceptional catering and memorable dining at Pomegranate Bistro. The restaurant's welcoming bar offers a full range of beverages, and their irresistible desserts are hard to leave behind without taking one home. www.pomegranatebistro.com



Pomegranate Bistro & Catering

So, members and friends, please take the time to enjoy the services of our Business Members, and when you do, remind them that you heard it from US! And, Thank You for the Loyalty you have for the Redmond Historical Society!

WILLOWMOOR FARM: BRATNOBER/NORTHWOOD PERIOD, 1921–1941 – PART 1

By Tom Hitzroth

In the last installment, we came to the end of the Clise Period and the beginning of the Bratnober/Northwood Period. On May 28, 1921, **James Clise** sold Willowmoor Farm to the Allen & Nelson Mill Company. Founded in 1890 under the stewardship of **John E. Bratnober**, the company later merged with the Bratnober Lumber Company, which was incorporated in 1910 and also owned by Bratnober. Mr. Bratnober changed the name of the farm from Willowmoor Farm to Northwood Farm.

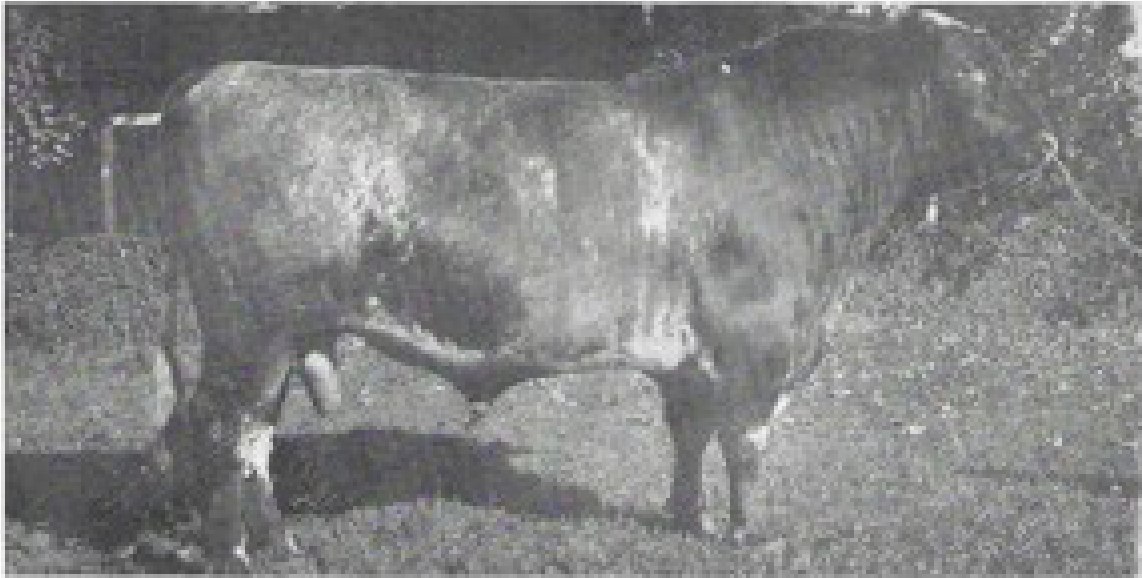
In 1999, I sent inquiries to Minnesota and Iowa, in areas associated with Bratnober's early years, to determine if there was a "Northwood" in their area. Replies from chambers of commerce, historical societies, tourism offices, and county agencies confirmed that no known place called "Northwood" existed in their areas, leaving the origin of the name a mystery.

Bratnober had severe asthma and did not come out to the farm very often. In interviews in 1998 with **Sandy Kachlein**, Bratnober's granddaughter, and **Gertrude Knisley**, the daughter of **George Kinney**, Bratnober's property manager, they said he could be at Northwood for an hour or so before he would have trouble breathing and have to leave.

Bratnober brought his own cattle to the farm. They were a breed called Milking Shorthorns. Milking Shorthorns were bred for both milk and beef production. In that time, Milking Shorthorns were a popular breed due their dual purpose, but they are not that popular today. A farmer at the Monroe Fair once told me that the preference now is for milk and beef to be separated. Bratnober's cows were all registered, just as James Clise's "Willowmoor Ayrshires" had been. At the time, Mr. Bratnober's herd was the largest in the Northwest, numbering some 261 head.



Jesse and John Bratnober in 1923.
Photo: Author's Collection



NORTHWOOD DEFENDER

BIRE: Walgrove Defender (dam Imp. Strawberry Queen, 4,200 pounds of milk, 35 pounds of butterfat), DAM: Imp. Billing White Ruth, 4,244 pounds milk, 32.35 pounds butterfat.

Northwood Defender, one of the Bratnober show cattle. Photo: Author's Collection

From 1922 to 1932, Mr. Bratnober would load his show cattle on railroad cars designed by **George Kinney** and take them to competitions in various shows around the West. Newspaper accounts show that as a breed, they won many ribbons and trophies. In my time at Marymoor Museum in the '90s, we had two of his silver trophies in the collection. As with the James Clise Ayrshires, John Bratnober's Milking Shorthorns were renowned for their quality milk and meat production.

Bratnober brought his son **John Bratnober, Jr.** to Northwood, and he and his family lived in the Clise house. Young Bratnober's administrative

responsibilities were separate from George Kinney's, who had oversight of the day-to-day farm operation. Bratnober's son had attended Redmond High School before he moved on to the University of Washington.

When Bratnober purchased Willowmoor Farm from James Clise, all the original farm buildings were still there and in good condition. Bratnober had around 20 employees at Northwood during his ownership.

In Part 2, we'll continue the story of the farm and how it weathered the Great Depression until its sale in 1941.

HERMAN SALES REED: THE SPARK THAT KEPT THINGS MOVING

By Dean Jowers and Halee Turner

Herman S. Reed arrived about 30 years after the town's earliest settlers, but quickly became a key figure in community life, education, business, and public service.

Reed was born on February 17, 1876, to **Eugene Cary Reed** and **Mary Ellen (Sales) Reed**. He attended high school in Howell, Michigan, and later trained as a teacher. After several years of teaching, he enlisted in the Spanish-American War in 1898, serving as a corporal in Company M of the 35th Michigan Infantry.

By 1900, Reed had relocated to Redmond, and was working as a teacher. The following year he married **Addie B. Burkhart**, whom he had met in Michigan. The couple raised six children while building a life in the growing community.

Reed spent more than two decades involved in local education, teaching in schools throughout the Redmond area, including Avondale and Happy Valley. Active in regional teachers' associations, he presented on educational topics and served in leadership roles. In later years he helped introduce motorized transportation for students, possibly purchasing the trucks that were modified into Redmond's first school buses.

In 1915, Reed became Redmond's postmaster, a position he held until 1933, but his work went well beyond handling mail. He assisted with voter registration, served as

a draft registration clerk during World War I, and was known for managing the small-town post office through several attempted robberies.

He also contributed to Redmond's economic development by being a part of many local real estate transactions and business ventures, in addition to operating a hotel and a general store of his own. Many of these projects that shaped the town we recognize today. He notarized the deeds that allowed the Methodist Church to move to its present location, and rented space to the Nokomis Club for Redmond's first public library.

In his personal life, Reed participated in fraternal organizations and civic groups, such as the Foresters of America, Fraternal Order of Eagles, the Sons of the American Revolution, and more. He was also a participant in many events and committees that promoted road development and travel by automobile, such as the Sunset Highway Improvement Club. And, he was an avid collector of coins, stamps, and war relics.

After more than three decades in Redmond, Reed died on March 5, 1933, after suffering from prolonged illness. His passing was widely mourned by residents who regarded him as a dedicated public servant and friend.

(Editor's Note: For an extended version of this article, visit the [Redmond Historical Society Blog](#).)



Knight Templar Herman Reed, c. 1927. Photo: RHS Archives



Herman S. Reed (front, right) and family, 1926. Photo: RHS Archives



Reed Family Home, c. 1915. Photo: RHS Archives

MEMBERSHIP MOMENTS – SUMMER 2026

By Paige Norman, Membership Chair



Redmond Watershed Hike, July 2021. Photo: Paige Norman

Think back on your favorite summer recollections. It could be from overnight camps, vacations, or your first rope swing into a local swimming hole. You may have been with family, friends, co-workers, or in a blossoming relationship, but you were part of something that made memories and connected you to others.

Membership is one of the best ways to preserve memories and stay connected to people with similar interests. Your membership with the Redmond Historical Society gives you access to our Saturday Speaker Series and a range of other resources that keep you in partnership with our ongoing mission of “collecting, preserving, and sharing Redmond’s unique heritage.”

If you haven’t joined, please consider one of our affordable levels of membership. If you’ve put off renewing, we’d love to have you back! You can also show your support by purchasing a Lifetime or Family Lifetime membership, or by becoming a *Sustaining Partner* through an annual donation in addition to your membership(*).

Trailblazer/Student (1 member)	\$5
Pioneer/Individual (1 member)	\$25
Homesteader/Family (2 members)	\$40
Visionary/Business	\$250
History Maker/Lifetime (1 member)	\$1,000
Legacy/Family Lifetime (2 members)	\$2,000

- Complete the form [online](#) and pay with check or card
- Call our office at (425) 885-2919 and pay with card

(* *Contributions are tax-deductible; consult your tax advisor.*

BANDS ROCK OUT AT OLD FIRE HOUSE CELEBRATION

By Laura Lee Bennett

Photos by John Oftebro

On Saturday, April 4, hundreds of Redmond residents, city officials as well as past OFH staffers and teens—turned out to celebrate the Old Fire House, the Teen Center, and its impact on the community. The Redmond Historical Society was there to share the building’s history, display posters from the all-ages music venue, and to collect stories. The event was filled with a mingling of music, joy, nostalgia, and frustration. Despite the mixed political climate, the music that filled the air seemed to calm everyone and bring the crowd together.

The OFH, a long-standing teen center and cultural hub since the 1990s, provided free programs, music performances, and a recording studio for teens 13–18, including neurodivergent, LGBTQ+, and at-risk youth. It closed in March 2025; however, Redmond City Council voted in November 2025 to rebuild a new teen center at the same location, prioritizing teen voices, music performance space, and a recording studio.

What’s your connection to OFH? What made it special? Got memories, stories, cassettes, videos, posters? RHS is looking to collect, preserve, and share the history of this building and venue.

Submit items online here: [OFH Submissions | Redmond Historical Society](#). If you have physical items to share or donate, please email info@Redmond-HistoricalSociety.org with the Subject line: OFH Submission.



OFH bands pay tribute to all-ages venue: Mae Amber, Tomo Nakayama, Fight Milk, and Suzzallo



Memorabilia display: flyers and posters from RHS Archives



RHS volunteers Eileen Englehart and Joe Townsend



RHS VP Laura Lee Bennett with Zach Houvener, Parks & Rec

RHS PARTNERS WITH LOCAL FILMMAKER

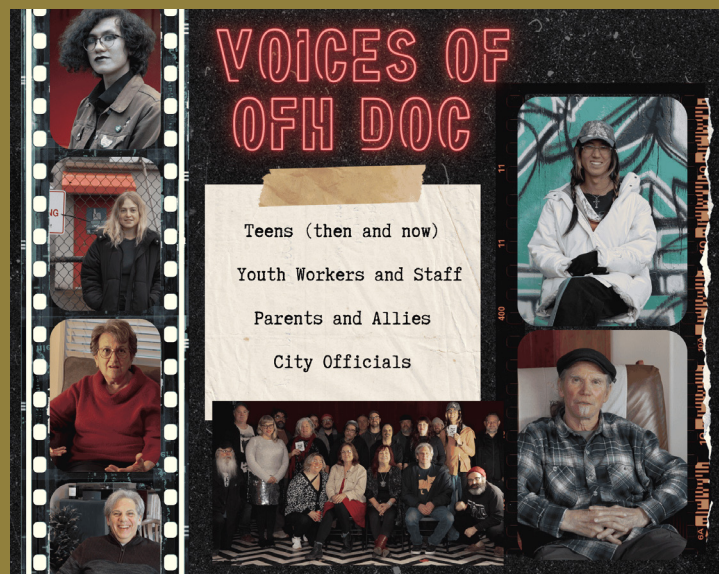
The Redmond Historical Society is pleased to work with **Starlyn Stout**, oral historian, researcher, and filmmaker, in her efforts to share the unique history of Redmond's Old Firehouse Teen Center and its significant impact on local teens, particularly those in alternative communities.

To help tell this critical story, the Society is providing resources from our archives and collections, and will help coordinate the future preservation of materials gathered for the film.

Recommended Viewing

Watch *OFH - The Documentary (Trailer One)*: <https://youtu.be/VsZyN6p1nMM>

"I believe that every community should have what Redmond has in the Old Firehouse. That's why I signed on to make this documentary. Not just to document something exceptional for people to reflect on fondly, but to record the formula and spread the OFH story as far as it will go." –Starlyn Stout

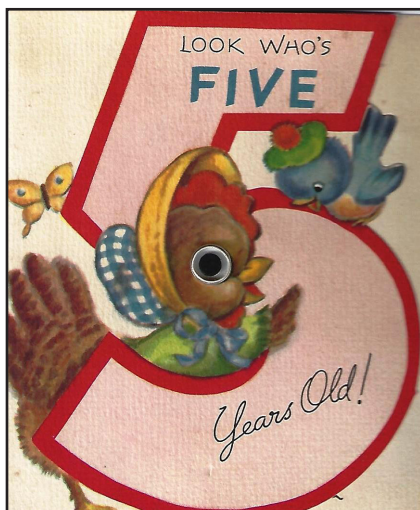


Watch the OFH Trailer

Project website: ofhdoc.com

YouTube: [OFH Documentary](#)

MEMBERSHIP BIRTHDAYS



June

Jane Koenig	June 1st
Judy Marrs	June 2nd
Donald White	June 5th
Pam Madison	June 7th
Marge Giuntoli	June 7th
Jennifer Szabo	June 9th
Gary Smith	June 10th
Linda Farrell	June 13th
Jan Harris	June 14th
Chuck Telford	June 14th
Tony Usibelli	June 22nd
Jerry Torell	June 25th
Jason Boyle	June 28th

July

Sylvia Bernauer	July 2nd
John Wayland	July 3rd
Gary Gilbertson	July 5th
Maggie Jossi	July 5th
Beverly Duke	July 11th
Roy Hanson	July 12th
Bill Cushman	July 13th
Robin de Regt	July 15th
Robert O'Keefe	July 15th
Faye Kerrigan	July 16th
Lorraine Weeks	July 17th
Othman Erekaeni	July 22nd
James Marslia	July 22nd
Paige Norman	July 30th

August

Eileen Englehart	August 1st
Irene Moe	August 2nd
Jane Mecke Wood	August 3rd
Sharon Ann Clark	August 8th
Soup Campbell	August 8th
Chelsea Rauch	August 9th
John DeYoung	August 18th
Stan Humann	August 18th
John DeYoung	August 18th
Forrest Wood	August 20th
Jackie Norris	August 22nd
Doris Schaible	August 25th

If you'd like us to recognize your birthday in this newsletter, please complete the information on your membership renewal form, or email: membership@redmondhistoricalsociety.org.

OUR SOCIETY LIFETIME MEMBERS

Deb Akerstrom
Robert Akerstrom
Sharon Freeman, Ballisty
Louise Graep Barnes
Laura Lee Bennett
David Best
Gail Cerra
John and Jay Cogan
David Ian Costanzo
Marjorie Costello
John Couch
Cory de Jong
***John Dixon**
Sally Jo Eberhardt
Elaine Sween Etzler
Don and Mary Fowler
Frank Garbarino
Peggy Garbarino
Madeleine Roberts Hagen
Tom Hansen
Mary Hanson
Jerry Hardy
Linda (Yoshitake) Hussey
Duane Isackson
Rosemarie Ives
Joanne Meier Isackson
Patricia Weiss Jovag

Dean Jowers
Barbara Weiss Joyce
Allen Lang
Judy Aries Lang
Judith M. Lankford
Theresa Lavender
Miguel Angel Llanos
***Cheryl Strong Magnuson**
***Gene Magnuson**
Jon M. Magnussen
Dorothy Matsui
Lorraine Isackson Mills
Diana Morelli
Gardner Morelli
McRedmond Morelli
Panfilo Morelli
Allison Reed Morris
***Paige Roper Norman**
***Russ Lewis Norman**
Jackie Norris
Thaddeus Norris
Edward O'Brien
Deborah Oftebro
John Oftebro
Elly Parran
Dale Potter
Jo Ann Potter

Bobbie Graep Rettig
***Noriko Riggleman**
Dave Rockenbeck
Laurie M. Rockenbeck
Margy U. Rockenbeck
William Rockenbeck
Doris Bauer Schaible
Dick Shinstrom
Karen Snapp
Frederick Springsteel
Karla Stalwick
Beryl Standley
John C. Stilin
Sherry B. Stilin
Larry O. Sundholm
Kris Swanson
Subhadra Terhanian
Doris Townsend
Joe Townsend
Patricia Trepanier
Roger Trepanier
Sue-Lynn Walsh
Patti Simpson Ward
Donald Glenister Watts
***John Wayland**
***Kristina Wayland**
Joanne Westlund
James Windle

An asterisk (*) indicates Family Lifetime members. A full listing of Lifetime Members, both current and in memoriam, is available at redmondhistoricalsociety.org.



**REDMOND
HISTORICAL
SOCIETY**

**REDMOND HISTORICAL SOCIETY
2026 MEMBERSHIP**

Every town has a history. Discover ours.

LEVELS OF MEMBERSHIP (Check one only)

Trailblazer/Student (1 member)	\$5	_____
Pioneer/Individual (1 member)	\$25	_____
Homesteader/Family (2 members)	\$40	_____
Visionary/Business	\$250	_____
History Maker/Lifetime (1 member)	\$1,000	_____
Legacy/Family Lifetime (2 members)	\$2,000	_____

I'd like to be a Sustaining Partner through annual donations in addition to my membership.

Membership Name(s): 1) _____ 2) _____

Address: _____ Unit# _____

City: _____ State: _____ Zip: _____

Phone: _____ Email: _____

Birthdate Member 1 _____ mm/dd/yy (optional)

Birthdate Member 2 _____ mm/dd/yy (optional)

Address Change New Member Renewal Gift membership

New to Redmond I am interested in being a volunteer

Memberships make great **GIFTS** for kids, grandkids, and friends.
Share the Redmond Historical Society with everyone on your list!

**PLEASE MAKE CHECKS PAYABLE TO:
REDMOND HISTORICAL SOCIETY**

16625 Redmond Way, Ste. M, PMB #352 • Redmond, WA 98052

You may also renew or purchase a membership through our website at

<http://www.redmondhistoricalsociety.org>

The Redmond Recorder, our quarterly newsletter, is available by email and viewable on our website. You may request a paper copy by contacting our office at

info@redmondhistoricalsociety.org



REDMOND HISTORICAL SOCIETY
16625 Redmond Way, Ste. M. PMB #352
Redmond, WA 98052

MAJOR SPONSORS

