



# THE REDMOND RECORDER

REDMOND HISTORICAL SOCIETY NEWSLETTER  
JANUARY 2023 • VOL. 25 • NO. 1

Every town has a history. Discover ours.

## ANNUAL MEMBERSHIP MEETING AND ICE CREAM SOCIAL ON JANUARY 14



**REDMOND  
HISTORICAL  
SOCIETY**

**Redmond Historical Society  
2023 Membership Social**  
**January 14, 2023 2:00 - 4:00 pm**  
**In person at the Happy Valley Grange**  
19720 NE 50th St, Redmond, WA 98053  
**Open to All! RSVP appreciated at**  
**RedmondHistoricalSociety.org**  
**or by calling (425) 885-2919.**

**Henrietta says,  
"Bring your  
friends!"**



Please join us in person for our annual Membership Meeting and Ice Cream Social at the Happy Valley Grange! For details, see p. 4.

- President **John Oftebro** shares "the School Bell Saga," p. 3.
- **Tom Hitzroth** explores the origin of "Salmonberg," Part II, p. 6.
- Society "lights up" booth, faces storm at Redmond Lights, pp. 5 and 10.
- Ready to serve? RHS Board positions open, p. 7.

# 2023

## BOARD OF DIRECTORS

### OFFICERS

John Oftebro • President  
Laura Lee Bennett • Senior Vice President  
Ed O'Brien • Vice President Finance  
Vacant • Vice President Collections  
Deborah Oftebro • Secretary

### DIRECTORS AT LARGE

Deb Akerstrom  
Paige Norman  
Jo Ann Potter

### ADMINISTRATIVE & COLLECTIONS MANAGER

Halee P. Turner

Our finances are public record and may be viewed at the office.

### NEWSLETTER EDITOR

Laura Lee Bennett

### COPY EDITOR

Deb Akerstrom

### GRAPHIC DESIGNER

Teresa Potter • Urban Dakota Creative

### PROOFREADER

Tom Hitzroth

### FREE NEWSLETTER

If you don't subscribe, please sign up.  
Call the office at **425.885.2919** or email [info@redmondhistoricalsociety.org](mailto:info@redmondhistoricalsociety.org).  
State your preference of email or U.S. Mail.  
The Historical Society prefers email as it's inexpensive and photos are enhanced online.

### FIND US ON FACEBOOK:

<https://www.facebook.com/Redmond.Historical.Society/>

### THE REDMOND RECORDER

is published ten times annually.

PHONE 425.885.2919

ADDRESS 16600 NE 80th Street #122  
Redmond, WA 98052

WEBSITE [redmondhistoricalsociety.org](http://redmondhistoricalsociety.org)

EMAIL [info@redmondhistoricalsociety.org](mailto:info@redmondhistoricalsociety.org)

HOURS Please contact the office to schedule an appointment

## SOCIETY NEWS

# BOARD OFFICER ELECTION RESULTS

The votes are in! Thank you for your continued support of the Redmond Historical Society!

Here are the Board Officers for the coming two-year term 2023–2024:

- President – John Oftebro
- Senior Vice President – Laura Lee Bennett
- Vice President of Finance – Ed O'Brien
- Secretary – Deborah Oftebro



## Compass Realtors Partner with RHS to Assist with Fundraising

Compass Real Estate Brokers, **Cynthia Olsen** and **Mary Sullivan**, have formed a unique partnership with Redmond Historical Society in an effort to help with fundraising for the Society. Cynthia and Mary will donate 10% of their earned commissions to support the Society when members use or refer business that results in a closed transaction. This partnership was formed as a way to give back to organizations that support our communities. Choose real estate brokers who go above and beyond to help with every detail of the buying and selling process, and support the Society! Cynthia and Mary will help you plan, organize, donate, and more—they do it all! Please be sure to say hello to Cynthia and Mary at our next meeting! For more info, contact [Cynthia.Olsen@Compass.com](mailto:Cynthia.Olsen@Compass.com), 425 877-9904, or [Mary.Sullivan@Compass.com](mailto:Mary.Sullivan@Compass.com), 425 449-2841.

# COMPASS



## THE SCHOOLHOUSE BELL SAGA By John Offebro

From 1875 to 1887, Redmond school children attended classes in a small log house. In 1888, classes were moved to the Congregational Church. Over the next ten years, the town built and lost two schoolhouses to arson—in August of 1895 and 1896, respectively. The log school (1875–1887) and the first Congregational Church, also called Melrose School (1888–1892), did not have belfries, so the bell, in all probability, did not appear until the church constructed a new building in 1893, which did have a belfry. By 1929, the bell had mysteriously disappeared.

In the 1940s, it was eventually located on the top of an outbuilding on 148th on property owned by **Al Hollingsworth**, and local residents recalled the bell being rung during a rally for the 1952 election of Dwight D. Eisenhower. **Floyd and Jeanne Messer** owned the property at the time, and in 1964, the 350-pound bell went with them when they moved. The Messer's niece, **Susan Bates**, ended up with the bell in Montana and gave it to her sister, **Barbara Feldman**, in 1988.



The bell on its way to Artech.  
Photo: City of Redmond

Barbara and her husband, **Roger**, decided the bell should be “back home,” and donated it to the City. The Greater Redmond Chamber of Commerce organized the transportation that included the donation of a truck and \$150 for gas. Feldman, a PSE employee, delivered the bell in time to ride in the 1988 Derby Day Parade.

The bell was refurbished and placed on the front steps of City Hall in 2000 until it was moved to the Public Safety Building in 2008. In 2015, when some deterioration was discovered, the bell was moved to Artech, a fine arts storage company in Renton, where it has remained until now.

We have just signed an agreement to receive the bell from the City of Redmond along with a grant for restoration. We are now planning for the restoration, fabrication of a pedestal, and moving and displaying the bell in the hallway outside our office/museum.



Possible location of school bell atop the Congregational Church.  
Photo: Eastside Heritage Center

# MEMBERSHIP



## Redmond Historical Society 2023 Membership Social

**January 14, 2023**

**2:00 - 4:00 pm**

**In person at the  
Happy Valley Grange**

19720 NE 50th St, Redmond, WA  
98053

## Major Sponsors



Happy Valley  
Grange #322



*Double your impact at  
this event! Longtime  
supporter Judy Lang will  
be matching the first  
\$1,000 in donations  
made during our Ice  
Cream Social!*

Reconnect with friends and  
meet new people while we  
thank you for preserving  
Redmond's unique history  
through membership.

**Open to All! RSVP appreciated at  
[RedmondHistoricalSociety.org](https://RedmondHistoricalSociety.org)  
or by calling (425) 885-2919.**

# REDMOND ‘LIGHTS UP’ AT REDMOND LIGHTS 2022

By Halee Turner

Imagine a world without holiday lights, video games, or computers. We rely on electricity for many things. Can you imagine how life was different before these inventions?

Modern electricity has a long history of ideas, inventions, and theories contributed by people all over the world. To celebrate Redmond Lights, we present a (very) abbreviated list of electrifying local achievements and advancements!

1873 - Seattle Gas Light Company provides gas light to the city for the first time.

1886 - Seattle has the first electric system through Seattle Electric Company.

1889 - McMinnville Water and Light is the PNW region's first municipal electric utility company.

1893 - Tacoma Power Company begins and is the longest-serving public utility company in the region.

1937 - Bonneville Power Act (BPA) encourages widespread use of electricity from the Colombia River dams.

1946 - Redmond family, the Morellis, are the first in the Seattle area to use electric lights in their hen houses.

1966 - The first traffic light in Redmond turns on at the intersection of Leary Way and Redmond (Jackson) Way.

1980 - Congress passes the Pacific Northwest Electric Power Planning and Conservation Act, which increases the BPA's ability to serve more demand. Also creates a council to work on electric power methods that are environmentally friendly.

2011 - Redmond City Hall installs two car charging stations.



Henry Isackson hauls telephone light poles.  
Photo: RHS Archives

## SALMONBERG: TO BE OR NOT TO BE – PART II By Tom Hitzroth

In the [November 2022 issue of this newsletter](#), we discussed the fact that there is no support in the historical record that Redmond was officially called “Salmonberg.” So what was it called? The historical record and common usage of the time shows that the area we know as Redmond was called “Sammamish.” In the documentation, the name is variously spelled *Samish*, *Samamish*, *Sammash*, or *Sammamish*. The earliest use of “Sammamish” we have found is in 1874, three years after the settlement was established.

“Sammamish” appears in the historical record and common usage in the following places: August 26, 1874, the King County Board of Commissioners establishes Sammamish as an election precinct with **L. McRedmond** as a judge to ensure the proper procedures were followed; the *Puget Sound Dispatch*, October 8, 1874, in an article on a non-partisan political convention, refers to L. McRedmond of Samamish; the *Seattle Daily Intelligencer* of November 25, 1876, refers to the election district of Samamish and L. McRedmond. The *Seattle Daily Intelligencer* of September 17, 1877, refers to L. McRedmond of Sammamish as a member of the King County Fair Board of Directors. The Washington Territorial Census of 1877 and 1878 includes the inhabitants of Sammash (see image), and an article in the *Seattle Daily Intelligencer* of August 21, 1878, contains a comment by

**Warren W. Perrigo** of the Samish Colony settlement concerning the availability of land in the settlement.

“Sammamish” was the name used by the Washington Territorial Government, King County Government, and was also in common usage by local newspapers. “Sammamish” was replaced by “Melrose” in 1881, and by “Redmond” in 1883.

The documents located so far show that “Sammamish” was the preferred name for the area—not “Salmonberg.” Traditions don’t go down easy, but as in any investigation, we must go where the evidence leads.

Washington Territorial Census of May 4, 1877. It is for the inhabitants of “Sammash,” including the families of Adam Tosh, Warren Perrigo, and Luke McRedmond. Miles Merritt (#66) claimed land, relinquished the claim, and the land was taken over by Morris J. Keller. Merritt named a local creek “Merritt Creek” and Keller renamed it “Bear Creek.” Source: Washington State Archives



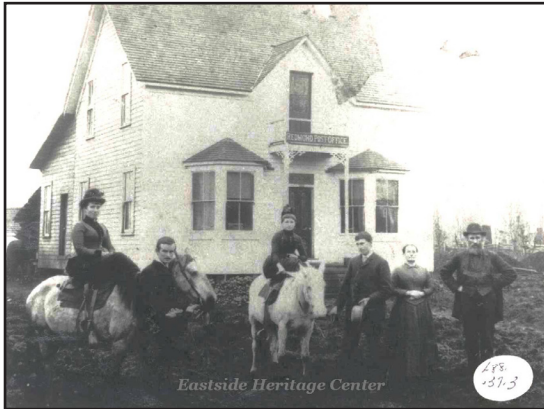
## VOLUNTEER OPPORTUNITIES WITH THE SOCIETY

Turnover on our Board is a healthy way of creating a broader culture for strengthening our goals and objectives. We have three openings for 2023 on our 10-member board, and are looking for people interested in helping us preserve Redmond's unique and rapidly changing history.

- Vice President, Collections
- Marketing and Branding
- Membership and Fundraising

For more information on each of these Board positions and committee activities, please contact Society president, John Oftebro, at [john.oftebro@redmondhistoricalsociety.org](mailto:john.oftebro@redmondhistoricalsociety.org), or by phone at 206-819-3075.

## THE McREDMOND FAMILY, CIRCA 1886



The McRedmond family from left to right:  
Emma, John, Anna, David, Kate, and Luke.  
Photo: Eastside Heritage Center

**Luke McRedmond** was named Postmaster of the settlement of "Melrose" on December 11, 1882, and remained so until March 18, 1883. He petitioned the United States Post Office for the name change to "Redmond" on February 22, 1883, and it became the Redmond Post Office on March 19, 1883. Luke was the last postmaster of Melrose and the first postmaster of Redmond. **William McRedmond** was the second postmaster until his death December 4, 1884, when he was succeeded by **Emma** in 1885.

# MEMBER BIRTHDAYS



Barbara Armstrong Johnson	Jan 2
Mark Tollfeldt	Jan 17
Donna Bailey	Jan 18
Gail Cerra	Jan 20
George Schaiable	Jan 31

If you'd like us to recognize your birthday in upcoming newsletters, please complete the information on your renewal form or email: [membership@redmondhistoricalsociety.org](mailto:membership@redmondhistoricalsociety.org).

## OUR SOCIETY LIFETIME MEMBERS

Deb Akerstrom  
Sharon Freeman, Ballisty  
Louise Graep Barnes  
Laura Lee Bennett  
David Best  
John and Jay Cogan  
Marjorie Costello  
John Couch  
Cory de Jong  
Sally Jo Eberhardt  
Betty L. Emmanuel  
Tony Emmanuel  
Elaine Sween Etzler  
Don and Mary Fowler  
Frank Garbarino  
Peggy Garbarino  
Madeleine Roberts Hagen  
Mary Hanson  
Jerry Hardy  
Chris Himes  
Duane Isackson  
Rosemarie Ives  
Patricia Weiss Jovag

Barbara Weiss Joyce  
Allen Lang  
Judy Aries Lang  
Judith M. Lankford  
Miguel Angel Llanos  
\*Cheryl Strong Magnuson  
\*Gene Magnuson  
Jon M. Magnussen  
Dorothy Matsui  
Diana Morelli  
Panfilo Morelli  
Allison Reed Morris  
\*Paige Norman  
\*Russ Norman  
Jackie Norris  
Thaddeus Norris  
Edward O'Brien  
Deborah Oftebro  
John Oftebro  
LeRoy Olson  
Dale Potter  
Jo Ann Potter  
Bobbie Graep Rettig

Dave Rockenbeck  
Laurie M. Rockenbeck  
Margy U. Rockenbeck  
William Rockenbeck  
Doris Bauer Schaible  
Dick Shinstrom  
Karen Snapp  
Frederick Springsteel  
Beryl Standley  
John C. Stilin  
Sherry B. Stilin  
Fred Stray  
Larry O. Sundholm  
Subhadra Terhanian  
Doris Townsend  
Joe Townsend  
Patricia Trepanier  
Roger Trepanier  
Sue-Lynn Walsh  
Patti Simpson Ward  
Donald Glennister Watts  
Joanne Westlund  
James Windle

An asterisk (\*) indicates Family Lifetime members. A full listing of Lifetime Members, both current and in memoriam, is available at [redmondhistoricalsociety.org](http://redmondhistoricalsociety.org).



# RENEW YOUR MEMBERSHIP!

January is a time of reflection, but also a time for rekindling resolutions for the New Year. It's also time to make sure your Society memberships are up to date! ***If you haven't renewed*** your membership with **Redmond Historical Society**, please include us in your plans for 2023!

When you renew your membership, you continue to enjoy all the benefits, programs, and activities, including:

- [Saturday Speaker Series](#) and Evening Speaker Series program. Members attend for free; a \$5 donation is requested from all non-members.
- [Redmond Historical Society](#) website with a wealth of historical stories about Redmond, including blog posts about people and current events.
- [The Redmond Recorder](#) newsletter featuring articles on Redmond's past, current events, and activities.

Your dues and any additional monetary donation support the continued growth of our historical collections, archives, and programs. Memberships also make great gifts for friends and family interested in Redmond history!

Renewing or joining is easy!

- Complete the form [online](#) and pay via Paypal
- Print a [form](#) from the website or newsletter and mail with your payment to our office at 16600 NE 80<sup>th</sup> Street, STE 122, Redmond, WA 98052
- Call our office at (425) 885 – 2919 and pay via Paypal

Thank you for your continuing investment in the legacy of Redmond's history.

Looking forward to seeing you on January 14, 2023 at the Happy Valley Grange for our 2023 Membership Social! Bring along a friend or two and introduce them to all Redmond Historical Society has to offer!



Great Blue Heron,  
Sammamish River, Redmond, WA.  
Photo: John Gustaveson

# 300 HOURS VOLUNTEERED IN DECEMBER! REDMOND LIGHTS: YIKES, WHAT A STORM!

Dear Valued Volunteers!

It was a “Dark and Stormy Night” in Redmond, but our wonderful volunteers braved the horrendous conditions to help us win the hearts of Redmond’s citizens by bringing some Holiday LIGHT into their lives!

While we had a wonderful plan for our booth, Mother Nature had her own plan!

First, I secured our booth space, dragged in our canopy, table, chairs, signs, lights, and activity materials so nicely constructed and organized by **Halee Turner** for families ready to cut out paper lanterns. But then, the rain and wind came in with a fury.

**Dale and Jo Ann Potter** helped with the final setup, and held on to the canopy posts to keep it in place. **Joe Townsend and Judy Lang** showed up early to take the first shift at 6:00 pm.

At 7:00 pm, **Mary Horabik and Deb Akerstrom** took over the booth, and within 15 minutes made the tough call to me to shut down and leave before our canopy was on the other side of the street!

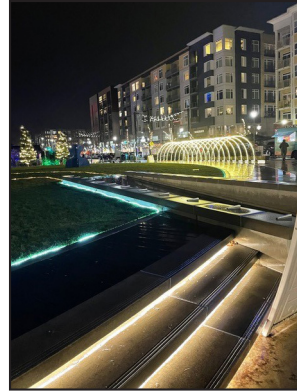


Photo: Mary Horabik

**Ed O'Brien** and I came to rescue Mary and Deb and the gear, packing everything up. Meanwhile, **Laura Lee Bennett** was picking up the Ice Cream Social promotion cards from the printer in time to give them away at her 8:00 pm shift—the shift that didn’t happen!

I haven’t heard the “customer count” yet, but I’m sure we got “points” from Brittany and the organizers from the City for being willing to contribute to the event! And thank you, Mary, for the photos!

Thank you all so much for your efforts. You are all special!

John Oftebro  
President



# REDMOND HISTORICAL SOCIETY

## REDMOND HISTORICAL SOCIETY 2023 MEMBERSHIP

Every town has a history. Discover ours.

### LEVELS OF MEMBERSHIP (Check one only)

<b>Trailblazer/Student</b> (1 member)	<b>\$5</b>	_____
<b>Pioneer/Individual</b> (1 member)	<b>\$25</b>	_____
<b>Homesteader/Family</b> (2 members)	<b>\$40</b>	_____
<b>Visionary/Business</b>	<b>\$250</b>	_____
<b>History Maker/Lifetime</b> (1 member)	<b>\$1,000</b>	_____
<b>Legacy/Family Lifetime</b> (2 members)	<b>\$2,000</b>	_____

☐ I'd like to be a Sustaining Partner through annual donations in addition to my membership.

Membership Names: 1) \_\_\_\_\_ 2) \_\_\_\_\_

Address: \_\_\_\_\_ Unit# \_\_\_\_\_

City: \_\_\_\_\_ State: \_\_\_\_\_ Zip: \_\_\_\_\_

Phone: \_\_\_\_\_ Email: \_\_\_\_\_

Birthdate Member 1 \_\_\_\_\_ mm/dd/yy (optional)

Birthdate Member 1 \_\_\_\_\_ mm/dd/yy (optional)

- ☐ Address Change   
 ☐ New Member   
 ☐ Renewal   
 ☐ Gift membership  
☐ New to Redmond   
 ☐ I am interested in being a volunteer

PLEASE MAKE CHECKS PAYABLE TO:

### REDMOND HISTORICAL SOCIETY

16600 NE 80th Street, Suite 122 • Redmond, WA 98052

You may also renew or purchase a membership through our website at  
<http://www.redmondhistoricalsociety.org>

Beginning September 2020 *The Redmond Recorder* will be available via email and viewable on our website. You may request a paper copy by contacting our office at [info@redmondhistoricalsociety.org](mailto:info@redmondhistoricalsociety.org).



**REDMOND HISTORICAL SOCIETY**  
Old Redmond Schoolhouse  
16600 NE 80th Street  
Room 122  
Redmond, WA 98052

## MAJOR SPONSORS



**CULTURE**



Happy Valley  
Grange #322

