



THE REDMOND RECORDER

REDMOND HISTORICAL SOCIETY NEWSLETTER
JUNE 2021 • VOL. 23 • NO. 6

Every town has a history. Discover ours.

HAVE A GREAT SUMMER!



**“Children’s parade” on Leary, ca. 1946.
From the Bob Martin Collection**

We’ll miss seeing you at Saturday Market and Derby Days this year. Stay tuned for updates on the “soft opening” of our office at the Old Redmond Schoolhouse. Meanwhile, visit our Facebook page, and check our website for upcoming events—including our summer walking tours of Redmond’s historic downtown. For details and to register, see p. 7. Our next issue of this newsletter will be the Special Summer Edition in August.

-
- President **John Oftebro** “plays ball” at Hartman Park, p. 3.
 - **Tom Hitzroth** looks at the Old Log School–Part 1, p. 6.
 - Family seeks new owner for Dudley Carter “Haida House,” p. 8.
 - Society launches Redmond Veterans Project, p. 10.

2021

BOARD OF DIRECTORS

OFFICERS

John Oftebro • President
Laura Lee Bennett • Senior Vice President
John Watson • Vice President Finance, CPA
Rachel Davis • Vice President Collections
Deborah Oftebro • Secretary

DIRECTORS AT LARGE

Ed "Dint" O'Brien
ChuNi Kao
Judith Simpson
Paige Norman
Jo Ann Potter
Sue-Lynn Walsh

ADMINISTRATIVE & COLLECTIONS MANAGER

Halee P. Turner

ATTORNEY • Charles Diesen

Our finances are public record and may be viewed at the office.

FREE NEWSLETTER

If you don't subscribe, please sign up. Call the office at **425.885.2919** or email info@redmondhistoricalsociety.org. State your preference of email or U.S. Mail. The Historical Society prefers email as it's inexpensive and photos are enhanced online.

FIND US ON FACEBOOK:

<https://www.facebook.com/Redmond.Historical.Society/>

THE REDMOND RECORDER

is published nine times annually.

NEWSLETTER EDITOR

Laura Lee Bennett

GRAPHIC DESIGNER

Teresa Potter • Urban Dakota Creative

PHONE 425.885.2919

ADDRESS 16600 NE 80th Street
Redmond, WA 98052

WEBSITE redmondhistoricalsociety.org

EMAIL info@redmondhistoricalsociety.org

HOURS Please contact the office to schedule an appointment

SOCIETY NEWS



Meet Deb Kyle, June's Guest

Editor! Deb has lived in the Seattle area

for about 30 years and currently resides near Duvall. She works for the King County Library System and loves maps, spending time in her flower garden, and reading novels. She is looking forward to contributing her editorial skills to this edition and other ways she may be useful to The Society.



Sotheby's
INTERNATIONAL REALTY

Society Partners with Sotheby's International Realty

Marketplace Sotheby's International Realty brokers **Cynthia Olsen** and **Mary Sullivan** have formed a unique partnership with the Redmond Historical Society in an effort to help raise money for the Society. Sotheby's International Realty will give 10% of commissions to support the Redmond Historical Society when you or someone you refer is looking to buy or sell property. Marketplace Sotheby's International Realty established this program as a way to give back to organizations that are committed to the welfare of our communities. For more information, contact Cynthia Olsen at cynthia.olsen@sothebysrealty.com, 425.877.9904, Mary Sullivan at mary.sullivan@sothebysrealty.com, 425.449.2841, or call the Society Office at 425.885.2919.



PLAY BALL! A PERSONAL BASEBALL HISTORY

By John Oftebro

When Abner Doubleday invented baseball in 1839, he had no idea how much fun it would be for Deborah and I to watch our grandson, Johnny Oftebro, in full catcher's gear behind the plate in his North Seattle Little League game last month. That was my position back in the '50s playing for the Mount Vernon Moose Club. Sitting there, watching the excitement of 9-, 10-, and 11-year-olds, took me back to the days at Redmond's own Hartman Park when I coached my kids, Ryan (Snoopy Sluggers) and Mary (Peppermint Pattys) in the '80s. What fun it was to watch kids progress with their skills, game knowledge, and sportsmanship as they advanced through a few years of play.

Today's Little League is more advanced with very enthusiastic coaches, kids mimicking their Mariners heroes (antics at the plate, in the field), much cooler uniforms and equipment, great

gloves, and an array of colorful aluminum bats. And, of all things, if grandparents can't make the game, they can watch it on their smartphones with the GameChanger app—a dedicated parent enters every pitch, hit, out, and play, which is then viewable with audio describing every moment of the game!

Hartman Park is a great place to spend the evening watching kids at play. And as Johnny's team ended up with an 18–7 win for the Rockies, there was plenty of action—in fact, much more action than a Mariners game! If you choose to go, arrive early, and take a nice walk around the rest of the 40-acre park and see what else meets your eye. Many thanks to Redmond Parks & Recreation and Society members **John Couch**, **Chris Himes**, and **Rosemarie Ives** for carving out our 47 community parks to enjoy.

REDMOND HISTORICAL SOCIETY SHARES LOVE OF REDMOND WITH FIRST VIRTUAL FUNDRAISER

Members, virtual guests, and other supporters gathered on Friday, May 7th to help the Redmond Historical Society raise over \$10,000 to be used to continue digitization of *Sammamish Valley News* pages and the purchase of display essentials for our museum space in the Old Redmond Schoolhouse.

Over 40 registered bidders donated and bid on items, including a Day at Bells Beach on Whidbey Island, five-course tasting menu for eight, handmade pies, one-of-a-kind artwork from local artists, and gift cards from local businesses and contributors.

Auctioneer **Troy McVicker** and **Scott Branston** of [EventSourceNW](#) produced the program, along with Society President, **John Oftebro**. The event featured videos from Redmond resident and former Mayor, **Christine Himes**, volunteer **Patsy Rosenbach**, Redmond's Poet Laureate **Raúl Sánchez**, Mayor **Angela Birney**, and Vice President **Laura Lee Bennett**. In case you missed it, check out these



video clips—and a virtual office tour, as well as FUNdraisers from Redmond history—on our YouTube channel: <https://tinyurl.com/3m4ajwyt>

Special thanks to [D&K Events](#) for cashiering services and **Halee Turner** for administration and website support.

Enormous thanks to our donors, sponsors, members, registrants, attendees, and winning bidders for your support! Donations are always accepted at <https://www.redmondhistoricalsociety.org/donate>. **Redmond Historical Society is a 501(c)(3) non-profit group (Tax ID 91-1994957).**



(L-R) Poet Laureate Raúl Sánchez shared an evocative poem. Auctioneer Troy McVicker and RHS President John Oftebro kept the program lively.
Photos: Paige Norman

I LOVE REDMOND BECAUSE...

For the Redmond Historical Society

By Raúl Sánchez, May 2021

Redmond is a place where culture
and technology converge.
A vibrant place, still growing,
under the canopy of the urban trees
moving forward, along the soothing sound
from the Sammamish river's rippling water,
and the early bird songs travelling down the lake.
Redmond is a vibrant spacious city,
where many cultures and flavors
dance together during So Bazaar,
brushed by the air from the Cascades.
Redmond is a place where art flourishes,
in many forms and languages.
Where we admire the winter Lights.
Come along, ride your bike,
enjoy the clean air at Marymoor Park,
where circus acrobats, concerts, movies
can be seen and the dogs run free.
Redmond embraces all in verse and song,
where people are welcomed all year long.
That is why I like Redmond, a friendly welcoming place.

THE OLD LOG SCHOOL – PART 1

By Tom Hitzroth

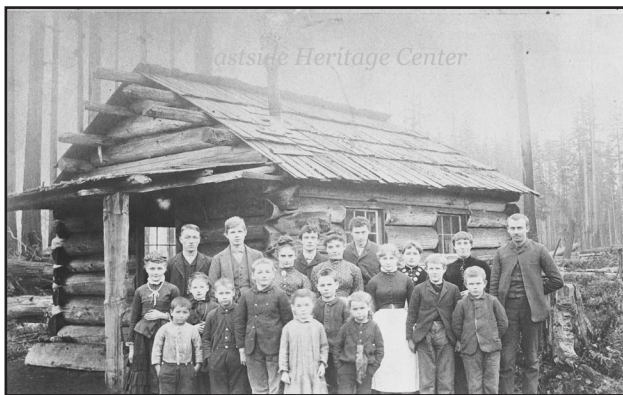
Not long after the first settlers arrived in what today is Redmond, a school became necessary to provide education for the area's children. The first school was a log structure (see photo).

According to **Clarence Bagley's** 1929 *History of King County*, the school opened in 1875 and operated until the fall of 1887, when it was closed "owing to the severity of the winter." The school was located on **Ben Weiss's** land, which today is the old Value Village property. In 1875, the quarter section line that was the property line between the **Luke McRedmond** and **Warren Perrigo** land claims went north to south through the center of Value Village.

The structure was 12 feet by 15 feet in size, which also happens to be a federal requirement for a cabin as

a land claim improvement. It could be that the log school started life as a homestead cabin, though no documentation of is available. The fallen logs and stumps surrounding the school indicate that it is on freshly cleared land. In 1874, the county approved a new road alignment close to the school. Part of that road still exists as Cleveland Street east of 166th Ave NE, Avondale Road, and Union Hill Road. Redmond was still a wilderness at this time.

On August 7, 1882, the log school and its surrounding area was set aside as School District #34. On December 16, 1892, the school district purchased one acre of land next to the Congregational Church from Warren Perrigo. In the next article, we will discuss the closure of the log school, and explore the question: was the weather really the cause?



Log School, ca. 1887. Source: Eastside Heritage Center

SOCIETY BRINGS BACK WALKING TOURS

Since 2003, **Tom Hitzroth** has led walking tours of Redmond's historic district. Over the years, the tour has evolved from one hour to two, with the script changing as new information is discovered. "I'm looking for the question I can't answer, which means I need to look further into a particular area."

A lifelong Eastside resident, Hitzroth continues to work at identifying details of Redmond development from its earliest times into the 1930s. He is currently researching the historic site of the earlier settlement of Melrose that preceded Redmond as well as the historic development of Redmond's downtown.



**Tom Hitzroth in front of the Justice White House/Hotel Redmond.
Photo: John Oftebro**



2021 Walking Tour Schedule

Sunday June 13, 1:00 p.m. to 3:00 p.m.

Sunday August 15, 1:00 p.m. to 3:00 p.m.

Sunday September 5, 1:00 p.m. to 3:00 p.m.

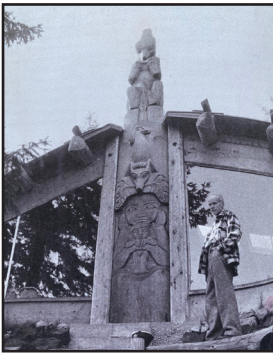
Tours meet as scheduled rain or shine and begin across the street from the Justice White House/Hotel Redmond (Jensen/Fey Architects) at 7730 NE 76th St.

Please be advised that fully vaccinated individuals may opt to not wear a mask during this event. These events also include a significant amount of walking or standing, with limited opportunities for resting. We recommend wearing comfortable shoes, weather-appropriate clothing, and bringing a water bottle.

Tickets are available for \$10 per person at [Redmond Historical Society Events](#). Registration is required by the Wednesday prior to the tour, and tours are limited to 10 participants. To ensure the group maximum is not exceeded, please make sure your registration includes every member of your party. For further questions, please call our office at 425-885-2919.

FAMILY SEEKS NEW OWNER FOR DUDLEY CARTER ‘HAIDA HOUSE’

Dudley C. Carter was a well-known sculptor on the West Coast. His long career as a sculptor and wood carver was inspired by the Haida and Kwakiutl people. He also built five Haida-style houses. The Haida House is one that he built in 1957 and used as his studio when he lived in Bellevue. It was purchased by **Bill McNae** in 1968, when Carter sold the property along the Bellevue Redmond Road. It was later dismantled, each piece of yellow and red cedar being carefully numbered. In 1983, the pieces were taken to Whidbey Island, where they were reconstructed on a hill overlooking Dugualla Bay and Mount Baker. It was used for the next 35 years as the McNae residence. The family is now looking to sell this treasured home. Interested parties may contact realtors, Win or Luke Van Pelt, win@vanpeltgroup.com.



(L-R) Dudley Carter in front of the Haida House before it was moved to Whidbey Island; the Haida House on Whidbey: view from the garden below, potting shed on the left. (Below) Entrance to the Haida House and yard; view from Haida House and deck, zoomed in.



401 HOURS!

The office is shaping up! In April, **Halee Turner**, **Dean Jowers**, and **Patsy Rosenbach** worked hard to organize the office. **Joe Townsend** has a great eye for hanging pictures, and spent many hours restoring this china cabinet,

which he donated to the museum. We made even more progress in May! Thanks to **Joe**, **Bob Loeffler**, and **Dale Potter** for helping move display fixtures back to the Schoolhouse.



Photos: John Oftebro

A Volunteer Voice ...

“Why volunteer? Partly I can’t say ‘no’. Partly it’s good exercise. But mostly, it’s mingling with interesting and stimulating people who have stories to tell. It’s discovering things and old stuff not in common use today. Plus, it’s just fun ... and occasionally, the goodies and coffee are reward enough. Life is good volunteering. The Society badly needs some younger blood.”

—Dale Potter

HAPPY BIRTHDAY!

Donald White	June 5	Othman Erekaeni	July 22
Jan Harris	June 14	Paige Norman	July 30
Tony Usibelli	June 22	Tsong-Jhy Kao	August 1
Robin de Regt	July 15	Jane Mecke Wood	August 3
Faye Kerrigan	July 16	John DeYoung	August 18

SOCIETY LAUNCHES REDMOND VETERANS PROJECT

Volunteer **Sue Stewart** hopes to expand our knowledge of Redmond veterans beyond their name, rank, and serial number. She would like to speak with family or friends of the individuals listed below, to help build short synopses of their lives and achievements—before, during, and after they served. Any information that helps us honor and remember these service members would be much appreciated! Contact our office for more information.

Don	Adler	Louis	Herzog
Charles	Alner	Arthur	Johnson
John G	Anderson	Ralph	Keller
Emil R	Amundson	Alec	Maleski
William	Enderlin	Joseph	Maruska
Sam H	Erickson	Wells	Perrigo
Peter Emil	Erickson	Robert	Perrigo
Roy Harmon	Getchell	William Jr	Perrigo

OUR SOCIETY LIFETIME MEMBERS

Sharon Freeman, Ballisty	Allen Lang	William Rockenbeck
Louise Graep Barnes	Judy Aries Lang	Doris Bauer Schaible
David Best	Judith M. Lankford	Dick Shinstrom
John and Jay Cogan	Miguel Angel Llanos	Frederick Springsteel
Marjorie Costello	*Cheryl Strong Magnuson	Beryl Standley
John Couch	*Gene Magnuson	John C. Stilin
Cory de Jong	Jon M. Magnussen	Sherry B. Stilin
Sally Jo Eberhardt	Dorothy Matsui	Fred Stray
Betty L. Emmanuel	Diana Morelli	Larry O. Sundholm
Tony Emmanuel	Panfilo Morelli	Subhadra Terhanian
Don and Mary Fowler	Allison Reed Morris	Doris Townsend
Frank Garbarino	Edward O'Brien	Joe Townsend
Peggy Garbarino	Deborah Oftebro	Patricia Trepanier
Madeleine Roberts Hagen	John Oftebro	Roger Trepanier
Suzanne Hall	LeRoy Olson	Sue-Lynn Walsh
Mary Hanson	Dale Potter	Patti Simpson Ward
Jerry Hardy	Jo Ann Potter	Donald Glennister Watts
Chris Himes	Bobbie Graep Rettig	Joanne Westlund
Rosemarie Ives	Dave Rockenbeck	James Windle
Patricia Weiss Jovag	Laurie M. Rockenbeck	
Barbara Weiss Joyce	Margy U. Rockenbeck	

An asterisk (*) indicates Family Lifetime members. A full listing of Lifetime Members, both current and in memoriam, is available at redmondhistoricalsociety.org.



**REDMOND
HISTORICAL
SOCIETY**

**REDMOND HISTORICAL
SOCIETY
2021 MEMBERSHIP**

Every town has a history. Discover ours.

LEVELS OF MEMBERSHIP (Check one only)

Trailblazer/Student (1 member)	\$5	_____
Pioneer/Individual (1 member)	\$25	_____
Homesteader/Family (2 members)	\$40	_____
Visionary/Business	\$250	_____
History Maker/Lifetime (1 member)	\$1,000	_____
Legacy/Family Lifetime (2 members)	\$2,000	_____

I'd like to be a Sustaining Partner through annual donations in addition to my membership.

Membership Name(s): 1) _____ 2) _____

Address: _____ Unit #: _____

City: _____ State: _____ Zip _____

Phone: _____ Email: _____

Birthdate: Member 1 _____ mm/dd/yyyy *(optional)*

Birthdate: Member 2 _____ mm/dd/yyyy *(optional)*

Address Change New Member Renewal Gift membership

New to Redmond I am interested in being a volunteer

PLEASE MAKE CHECKS PAYABLE TO:

REDMOND HISTORICAL SOCIETY

16600 NE 80th Street • Redmond, WA 98052

You may also renew or purchase a membership through our website at

<http://www.redmondhistoricalsociety.org>

The Redmond Recorder is available via email and viewable on our website. You may request a paper copy by contacting our office at info@redmondhistoricalsociety.org.



REDMOND HISTORICAL SOCIETY
Old Redmond Schoolhouse
16600 NE 80th Street
Room 122
Redmond, WA 98052

MAJOR SPONSORS



CULTURE



THE BELLEVUE
COLLECTION™
BELLEVUE SQUARE
LINCOLN SQUARE BELLEVUE PLACE



Happy Valley
Grange #322

